



WS

Webbing Puller

INSTRUCTION GUIDE

- PLEASE PASS ONTO OPERATOR

Sticker here

UK
CA | CE





Operator Instruction Guide



MUST READ BEFORE USE

1. It is important that this manual is read and fully understood and that all instructions are followed before using the webbing puller.
2. The webbing puller should be used by a trained and or experienced person who understands its use and will operate the unit in a responsible and safe manner.
3. Inspect the machine for any damage or wear before use. Do not use the machine if it is not in good working order.
4. The supplier takes no responsibility for any consequential loss or damage if the unit has been dismantled or altered by an unauthorised person, especially if original parts were not used to repair the machine.
5. The machine is not to be used for lifting.
6. Do not use the machine to lift or support people in any way.
7. The machine is for manual operation only. Do not attempt to use a motorized mechanical device to operate the machine. Only use the handle provided and do not extend the supplied handle.
8. Do not attempt to overload the machine as this could cause damage to person or machine.
9. Do not use the webbing puller in explosive environments.
10. Always ensure the puller is used or repaired by a competently trained person.

Contents:

1. Safety Information	2	6. Product Warranty and Warnings	6
2. Function/Operation	3	7. Technical Data	7
3. Inspection, Examination and Maintenance	4	8. Exploded Diagrams	7
4. Transport, Storage, Decommissioning and Disposal	5	9. Inspection Log	8
5. Manufacturer Testing and Verification	5		

For details of the full Tiger product range visit our website: www.tigerlifting.com

Due to our policy of continual product development, dimensions, weights and specifications may change without prior notice.

© Copyright Tiger Lifting UK Limited. No part of this manual shall be reproduced, transmitted, transcribed, translated into any language human or electronic, stored in any electronic retrieval system, in any form without the written permission of Tiger Lifting UK Limited, Morpeth, UK



1. Safety Information

Tiger Lifting products have been built in accordance with state of the art and generally accepted engineering standards. Nonetheless, incorrect handling when using the products may cause dangers to life and limb of the user or third parties and/or damage to the trolley or other property. The operating company is responsible for the proper and professional instruction of the operating personnel. The personnel responsible for operation, maintenance or repair of the product must read, understand and follow these operating instructions. These instructions are intended to make the user familiar with the product and enable them to use it to the full extent of its intended capabilities. Acting in accordance with these instructions helps to avoid danger, reduces repair costs and downtime and increases the reliability and lifetime of the product.

The operating instructions must always be available at the place where the product is operated. Apart from the operating instructions and the accident prevention act valid for the respective country and area where the product is used, statutory regulations and procedures along with the commonly accepted regulations for safe and professional work must also be adhered to. The indicated protective measures will only provide the necessary safety if the product is operated correctly and installed and/or maintained according to the instructions. The operating company must be committed to ensure safe and trouble-free operation of the product.

If the product's ability to do a job, or to do so safely is in question – DON'T TRY IT.

Definitions

! WARNING

Indicates a potentially hazardous situation that, if not avoided, could result in death or serious injury. It may also be used to alert against unsafe practices.

Competent Person

The competent person should have appropriate, practical and theoretical knowledge and experience of the Tiger product which will enable them to detect defects or weaknesses and to assess their importance in relation to the safety and continued use of the unit. Competent persons may be, for example, the maintenance engineers of the manufacturer or the supplier. However, the company may also assign performance of the inspection to its own appropriately trained specialist personnel.

Health and Safety at Work

All equipment must be maintained and tested to meet relevant statutory regulations when put to use. It is the responsibility of every company to ensure that their employees have been fully and properly trained in the safe operation of their equipment.

It is the owner's and user's responsibility to determine the suitability of a product for any particular use. It is recommended that all applicable industry, trade association, federal, state and local regulations are checked. Read all operating instructions and warnings before operation.



Equipment Labelling

The identification body plate details the product type, model, manufacturer, capacity and serial number.



2. Function/Operation

Tiger Webbing Pullers are designed for use in hot line applications, to tighten conductors and stays. They are lightweight and incorporate a webbing strap and lever handle. When clean and dry, the polyester webbing strap provides insulating properties. Along with the Fibre Reinforced Plastic (FRP) insulated handle this increases electrical safety when tensioning conductors and similar tasks. It also has a load holding function in both forward and reverse modes which are selected by a single click of the ratchet tab. The handle can rotate 360° to allow the most efficient use of the ratchet at any angle.

Tiger webbing pullers are very easy to use. Only use this puller for the purpose for which it was designed

Free Wheeling

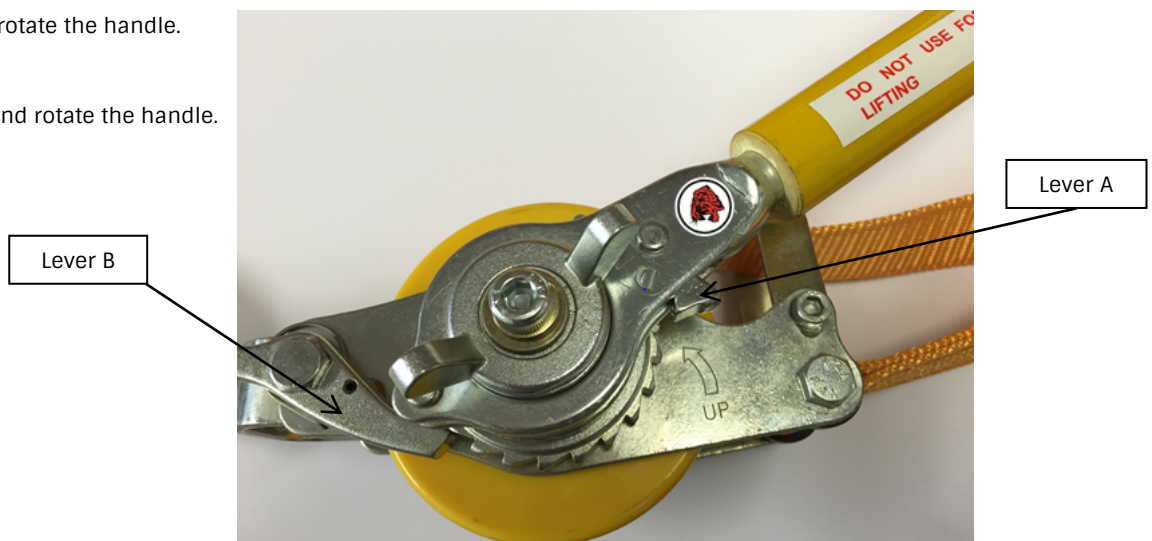
Set lever A at NEUTRAL position and release ratchet pawl lever B with finger. The webbing may then be unreeled.

Pulling

Set lever A to UP and rotate the handle.

Releasing Load

Set lever A to DOWN and rotate the handle.





! WARNING

- Always** store and handle the webbing puller correctly.
- Always** inspect the webbing puller for damage or wear before use and before placing into storage.
- Always** ensure one full wrap of webbing remains on the drum prior to applying load.
- Always** replace webbing that is showing wear, abrasion, cuts or is soiled.
- Always** keep the puller clean and maintained.
-
- Never** remove the “DO NOT USE FOR LIFTING” sticker on the handle.
- Never** use the puller for lifting applications.
- Never** use the machine to lift or support people in any way.
- Never** overload the machine as this could cause damage to person or machine.
- Never** extend handle by using objects to increase leverage.
- Never** pull on the point of the hook or overcrowd the hook with fittings.
- Never** use defective webbing pullers.
- Never** expose to chemicals, particularly acids, without consulting the supplier.
- Never** expose to the elements, water spray, steam etc without consulting the supplier.
- Never** throw or drop webbing pullers.
- Never** attach a load, hoist or any other object to any part of the puller other than the anchor point.

3. Inspection, Examination and Maintenance

Keep the webbing puller clean and maintained. It is your responsibility and duty of care.

Inspect the puller prior to each usage for damage or wear.

The intervals for maintenance should be determined by the working conditions and usage of the puller. You must follow your own safety guidelines and procedures.

Inspection, Examination and Maintenance should include:

- Inspect hooks and latches for damage.
- Hooks should be checked that the mouth of the hook has not been subject to overload and spread open.
- Replace any damaged strap.
- Check for any missing split pins.
- Inspect handle for damage.
- Remove handle. (Handle has reverse thread)
- Remove ratchet brake.
- Ratchet brake and brake pad should be wiped clean.
- Check ratchet brake for excessive wear and only replace if showing wear.
- When refitting the ratchet brake special care must be taken.
- Place one small drop of clean light grade oil on the tip of finger and spread this thinly over the surface of the ratchet brake. Do not over oil a thin coating only.
- Never apply grease to any parts of the braking mechanism.
- Clean ratchet section of handle.
- A small amount of oil may be used on the ratchet section and thread of the handle. Wipe off any excess oil.



- Ensure that the rubber “O” ring is directly under the handle and in the centre and does not squash out to one side as the ratchet puller is wound back into place.
- Test the puller to ensure that it is working perfectly.
- Check the “DO NOT USE FOR LIFTING” sticker is still on the handle.

It is recommended that for optimum performance and to prolong the life of this puller that at regular intervals maintenance should be undertaken by an authorised repair agent.

Only authorised repair agents should perform repairs and testing. Use only genuine authorised replacement parts.

4. Transport, Storage, Decommissioning and Disposal

Transporting the unit:

- Do not drop or throw the unit, always deposit it carefully.
- Use suitable transport means. These depend on the local conditions.

Storing or temporarily taking the unit out of service:

To ensure the continuing integrity of the unit you should store the unit in conditions that do not lead to damage or deterioration. Therefore:

- Inspect webbing pullers and accessories before placing into storage.
- **Never** return damaged webbing pullers to storage.
- The unit should be secured against unauthorised and unwarranted use.
- Store the unit in a clean and dry place.
- Protect the unit including all accessories against contamination, humidity, sharp objects, direct sunlight, chemicals and damage by means of a suitable cover.
- Protect against corrosion.
- Wipe off all dirt and water.
- A light oil film should be applied to moving parts.
- If the unit is to be used again after it has been taken out of service, it must first be inspected again by a competent person.

Disposal

After taking the unit out of service, recycle or dispose of the parts of the unit in accordance with the legal regulations.

5. Manufacturer Testing and Verification

This product was manufactured under our single-unit control of quality and was passed with strict inspection in accordance with our inspection standards.

Tiger Webbing Pullers have a 4:1 factor of safety and have passed the 15V electrical test.



6. Product Warranty and Warnings

Definitions

'Customer' means the individual, firm, company or other party with whom the Company contracts;

'Company' means Tiger Lifting UK Limited or Woo Sing Industrial Co., Ltd;

'Contract' the contract between the Company and the Customer for the sale and purchase of this product;

'Defective Goods' goods, parts or materials, which by reason of fault or incorrect design or workmanship, are found to be defective or fail or are unable to perform in accordance with a Contract;

One Year Limited Warranty

The Company makes every effort to assure that its products meet high quality and durability standards and extends the following warranty to the Customer of new products manufactured by the Company:

1. The Company warrants that this product, when shipped, shall be free from defects in materials and workmanship under normal use and service and the Company shall, at its election, repair or replace free of charge any Defective Goods, provided that all claims for defects under this warranty shall be made in writing immediately upon discovery and, in any event, within one (1) year from the date of purchase of this product by the Customer and provided, further, that Defective Goods shall be kept for examination by the Company or its authorised agents or returned to the Company or an authorised service centre upon request by the Company.
2. The Company does not warrant components of products provided by other manufacturers. However to the extent possible, the Company will assign to the "Purchaser" applicable warranties of such other manufacturers.
3. Except for the repair or replacement mentioned in (1.) above, which is the Company's sole liability and Customer's exclusive remedy under this warranty, the Company shall not be responsible for any other claims arising out of the purchase and use of this product, regardless of whether the Customer's claims are based on breach of contract, tort (including negligence), breach of statutory duty, or otherwise, including claims for any loss of profit, goodwill or business opportunity or any indirect or consequential loss arising under or in connection with the Contract.
4. This one year limited warranty is conditional upon the installation, maintenance and use of this product pursuant to the product manuals prepared in accordance with content instructions by the Company. The warranty on this product does not apply to defects due directly or indirectly to misuse, abuse, negligence or accidents. This warranty does not apply if the product has been subjected to improper fittings, alignment or maintenance.
5. The Company shall not be responsible for any loss or damage caused by transportation, prolonged or improper storage or normal wear and tear of this product or for loss of operating time.
6. This warranty shall not apply to this product if it has been fitted with or repaired with parts, components or items not supplied or approved by the Company or which have been modified or altered.
7. The Company limits all implied warranties to the period specified above from the date the product was purchased by the Customer.
8. Except as stated herein, any implied warranties or merchantability and fitness are excluded.

If our inspection discloses a defect, the Company will repair, replace the product or refund the purchase price, if we cannot readily or quickly provide a repair or replacement and if you are willing to accept such refund. The Company will return repaired or replacement products at The Company's expense, but if it is determined there is no defect, or that the defect resulted from causes not within the scope of Tiger Lifting's warranty, then the Customer must bear the cost of storing and retrieving the product.

! WARNING

The use of this product is beyond the control of Tiger Lifting. The warranty of this product is limited to the replacement cost of this product should it be found to be defective in material and/or workmanship. The warranty is void if the unit is damaged, worn or used improperly. Normal wear and tear is not considered grounds for replacement. The Tiger Lifting product warranty does not apply where there has been excessive overloading of the machine.

Disclaimer

We believe that the information in this document, including technical information and any advice, is reliable although we give no guarantee as to its accuracy or completeness. The user of our products must determine if the product, either used alone or conjunction with other products, is suitable for their purpose and assumes all risk and liability in connection with those decisions. We have made every effort to make sure this document is accurate. The information contained in this document does not form part of any contract.



Please also refer to our terms and conditions which can be found at: www.tigerlifting.com/terms-conditions/

7. Technical Data

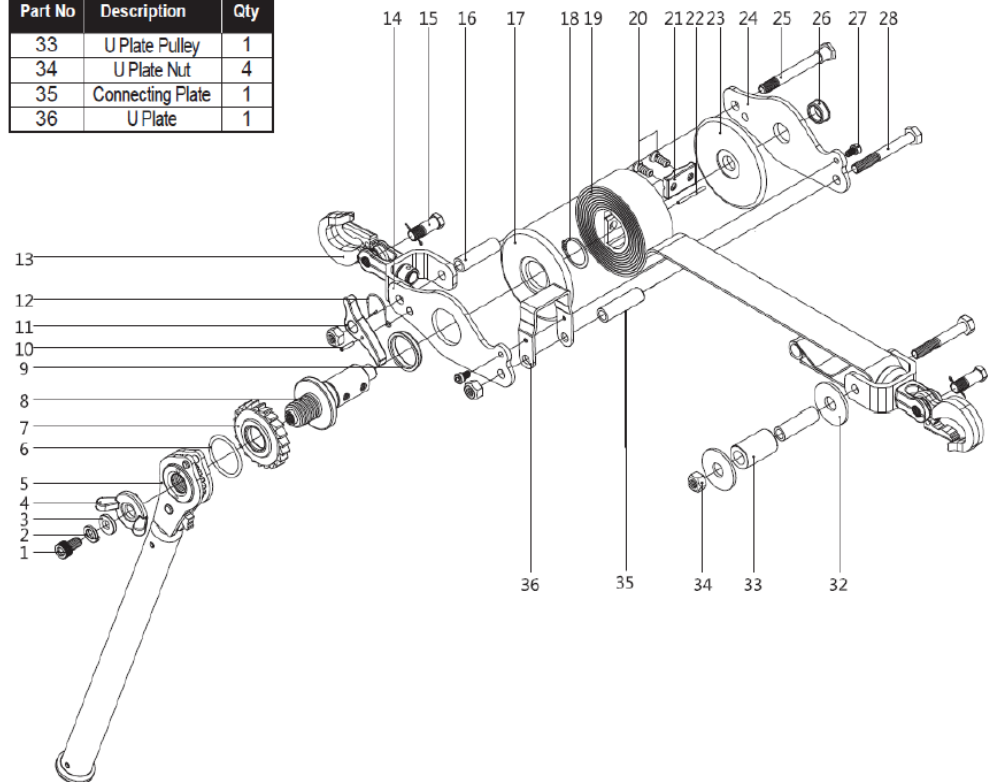
Code	Capacity (tonne)	Strap Size (mm)	Lever Length (mm)	Max Length (mm)	Min Length (mm)	Weight (Kg)
WS-1000	1.0t	2 x 33	400	2000	420	3.2
WS-1500	1.5t	2.2 x 40	460	2000	420	4.5
WS-2000	2.0t	2.2 x 40	460	2000	450	4.5

8. Exploded diagrams


The following diagram is intended to clarify terms that appear in the manual.

Part No	Description	Qty
1	Hex Bolt	1
2	Spring Washer	1
3	Flat Washer	1
4	Wing Washer	1
5	Insulated Handle	1
6	Rubber O-Ring	1
7	Brake Gear	1
8	Drum Shaft	1
9	Large Bushing	1
10	Ratchet Pawl Pin	1
11	Ratchet Pawl	1
12	Ratchet Pawl Spring	1
13	Hook	3
14	Body Plate	1
15	Body Plate Screw	3
16	Body Plate Pipe	1
17	Large Side Disc	1
18	Strap Pin	1
19	Webbing Strap	1
20	Strap Screw	2
21	Strap 2 hole Plate	1
22	Strap Pin	1
23	Small Side Disc	1
24	Body Plate	1
25	Side Plate Screw	1
26	Small Bushing	1
27	U Plate Screw	1
28	U Plate Bolt	1
29	U Plate Bolt	2
30	U Plate Pipe	2
31	U Plate Washer	2
32	U Plate Washer	2

Part No	Description	Qty
33	U Plate Pulley	1
34	U Plate Nut	4
35	Connecting Plate	1
36	U Plate	1





 **Tiger HQ Taiwan**

Woo Sing Industrial Co., Ltd
6F, No. 118-1,
ZhongZheng Road
Shilin Dist.,
Taipei City
11145
Taiwan
☎ +886-2-2831 3035
📠 +886-2-2834 0188
✉ info@tigerlifting.com.tw

 **Tiger UK and Europe**

Tiger Lifting
Coquet Enterprise Park
Amble
Morpeth
Northumberland
NE65 0PE
United Kingdom
☎ +44 1665 605130
📠 +44 1665 603185
✉ info@tigerlifting.com

 **Tiger North America**

Tiger Lifting NA
38381 N. Robert Wilson Rd.
Suite B, Gonzales, Louisiana
70737
USA
☎ +1 225-647-1312
☎ +1 833-681-3057
✉ sales@tigerliftingna.com

☎ **Representative in Europe**

 **Tiger China – Sales Office**

☎ +86 (0) 22 5984 8679
☎ +86 138 2377 3024
✉ info@tigerlifting.com.cn

 **Tiger SEA Warehouse (Singapore)**

Blk 18, Boon Lay Way #05-147
Tradehub 21
Singapore
609966
☎ +65 8818 6418
📠 +65 6250 0661
✉ info@tigerlifting.com.sg

www.tigerlifting.com



© Copyright Tiger Lifting UK Limited. No part of this manual shall be reproduced, transmitted, transcribed, translated into any language human or electronic, stored in any electronic retrieval system, in any form without the written permission of Tiger Lifting UK Limited, Morpeth, UK

www.tigerlifting.com

Instruction Guide Tiger WS En 202404 v1.1

