

» Anti-accidental Falls

SSCC130

CLAMP WITH FALL ARREST EQUIPMENT

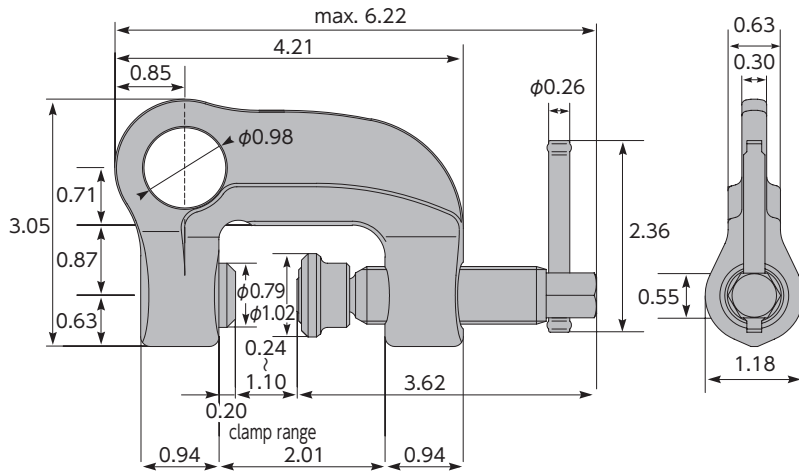
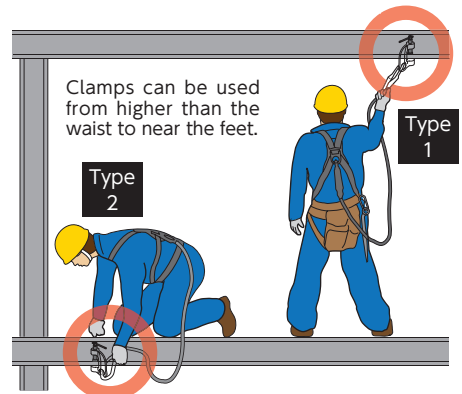
CHECK!



PDF of Catalogue

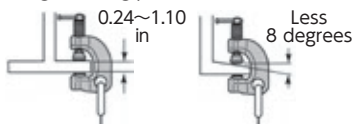
Example of use

Fall arrest equipment (safety belt standard (compatible type 1 and type 2))



Handling of clamps with fall arrest equipment

● Right setting point



⚠ It cannot be set to slanted-shape part such as steel objects I-beam.

● Right setting direction

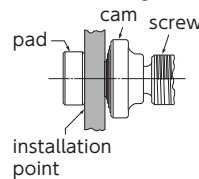


Features

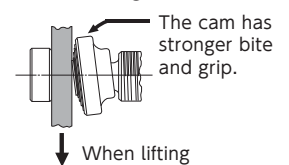
- Upgraded the maximum usable equipment weight up to 286.60 lb.
- Screws, cams, and pads make clamps hard to come off even when vibrations occur during operation.
- In proportion to the increased tensile force of the rope (lifeline), the cam tilts to increase the tangential surface and grips more strongly.
- High frequency quenching of special alloy steel gives greater toughness and durability.

Structure of cam

● When setting



● When lifting



Item	Maximum usable equipment weight (lb)	Clamp range (in)	N.W.(lb)
SSCC130	286.60	0.24~1.10	1.50

\* Equipment weight means the total weight of body and all equipment. \* Please use the type 1 and 2 of fall arrest equipment (safety belt) standard.  
\* For the torque value of the screw tightening, operate tightening over 3.69ft·lb.