

» Automatic Releasing System

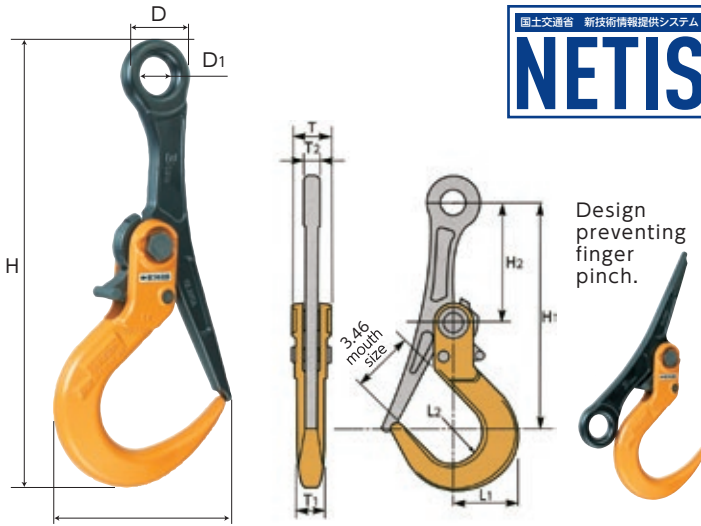
SLH3A

SUPER LOCK HOOK (Open / Close Lock Type)

CHECK!

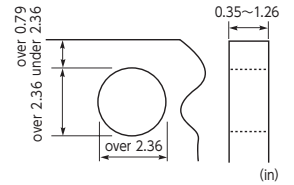
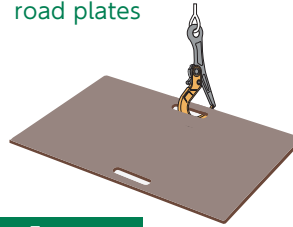


PDF of Catalogue



Example of use

Laying and removing road plates



⚠ The applicable road plate thickness and hole dimensions shall be within the ranges of the drawing and the chart.

Features

- During lifting, the close lock is automatically set so that the load can be lifted safely without coming off.
- When removing the hook, as a lever enables to set an open lock, removing the hook from works like a crane for instance is very easy.
- The hook mouth opens widely, making load set or remove operation very simple.

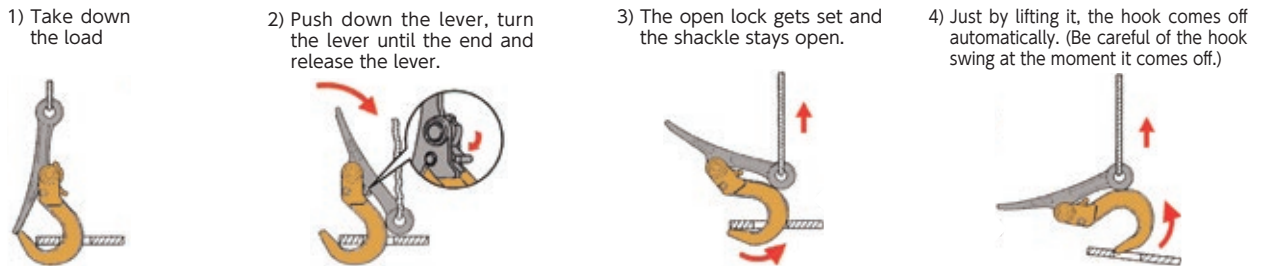
Turning the shackle and close the mouth will lock the hook automatically.

When lifting in this position, the shackle turns only to the closing direction.

State with the open lock set.



Open lock mechanism



Item No.	Rated capacity (ton)	Size (in)											N.W. (lb)
		L	L1	H	H1	H2	D	D1	R	T	T1	T2	
SLH3A	3	6.65	3.07	15.08	11.02	5.71	2.52	1.26	1.50	2.13	1.30	0.71	8.82

» For Extra Safety

SLH3AC

SUPER LOCK HOOK WITH CHAIN SLING (Open / Close Lock Type)

CHECK!



PDF of Catalogue



Features

- Chain slings can be used safely for a longer time than wire ropes.
- Including a tag showing the serial number and the rated capacity for control.
- When removing the hook, as a lever enables to set an open lock, removing the hook from works like a crane for instance is very easy.

Size of master link

- Inner diameter: 2.76×5.51in
- Wire diameter of master link: φ0.75in



Item No.	Rated capacity (ton)	Set details		L (in)	N.W. (lb)
		Super lock hook item No.	Chain item No.		
SLH3AC	3	SLH3A	CSC31	54.76	16.09