

Normal Type

SLH-N

SUPER LOCK HOOK

CHECK!

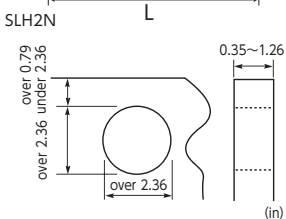
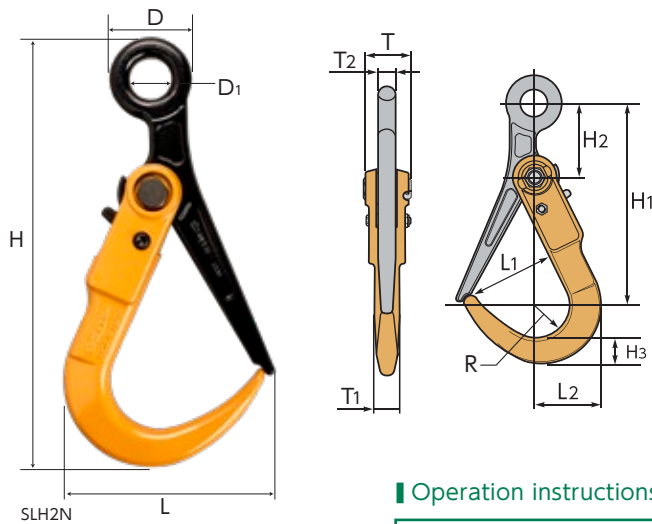


Operation manual & parts drawing

Example of use

Laying and removing road plates

As a safety hook for direct lifting

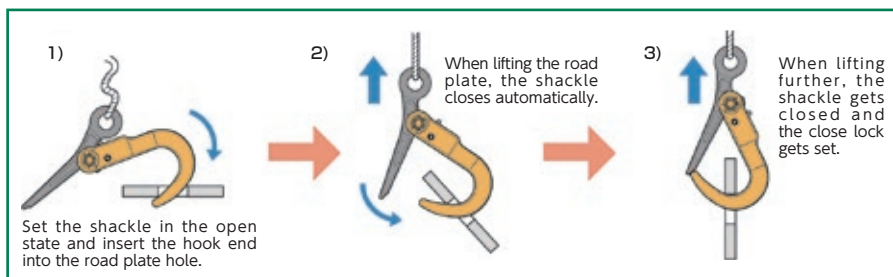


⚠ The applicable road plate thickness and hole dimensions shall be within the ranges of the drawing and the chart.

Features

- Ideal for laying or removing road plates and for lifting wire ropes and sling belts.
- The hook mouth opens widely, making load set or remove operation very simple.
- During lifting, the close lock is automatically set so that the load can be lifted safely without coming off.

Operation instructions for lifting a road plate



Item No.	Rated capacity (ton)	Size (in)												N.W. (lb)	
		L	L1	L2	H	H1	H2	H3	D	D1	R	T	T1		T2
SLH1N	1	5.51	3.15	2.56	11.73	8.27	3.15	1.10	2.20	0.94	1.26	1.89	1.10	0.63	5.51
SLH2N	2	6.54	4.13	2.95	13.23	9.29	3.50	1.18	2.52	1.26	1.50	2.13	1.14	0.71	7.05
SLH3N	3	6.65	4.13	3.07	13.35	9.29	3.50	1.30	2.52	1.26	1.50	2.13	1.22	0.71	7.50

For Extra Safety

SLH-NC

SUPER LOCK HOOK WITH CHAIN SLING

CHECK!



PDF of Catalogue

Features

- Chain slings can be used safely for a longer time than wire ropes.
- Including a tag showing the serial number and the rated capacity for control.

Size of master link

- Inner diameter: 2.76×5.51in
- Wire diameter of master link: φ0.75in



Item No.	Rated capacity (ton)	Set details		L (in)	N.W. (lb)
		Super lock hook item No.	Chain item No.		
SLH2NC	2	SLH2N	CSC31	52.91	14.77
SLH3NC	3	SLH3N	CSC31	53.03	15.21

★ Parts drawings and operation manuals can be downloaded from our website.  
● For all the appendix, please refer to P.54 ~56

Vertical & lateral lifting clamps

Vertical lifting clamps

Lateral lifting clamps

Horizontal lateral lifting clamps, lifting hooks

Steel beam lifting clamps, balance

Screw cam clamps

Beam clamps

Super foot locks, lifting hooks

Super lock hooks

Drum lift clamps

Lifting hooks for forklift, rail clamps

Reinforcing rod vertical lifting clamps

Clamp with fall arrest equipment