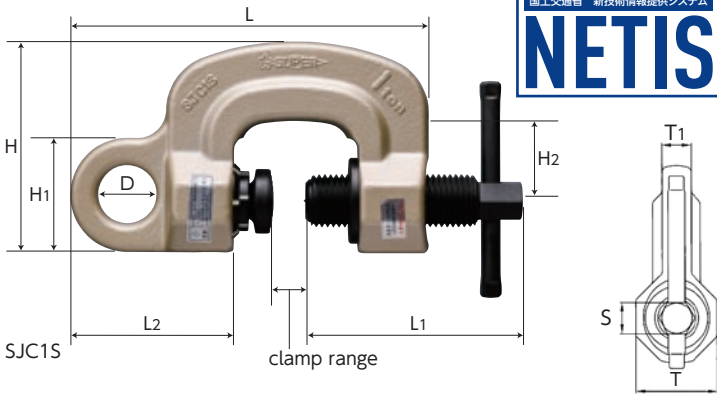
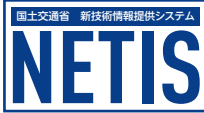


» Original Twist Cam System

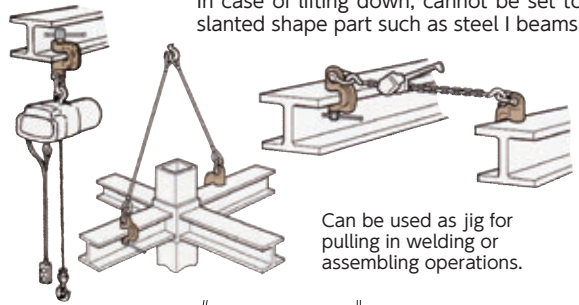
SJC-S

SCREW CAM CLAMP (Single Eye Type)  
Twist Cam Type PAT.

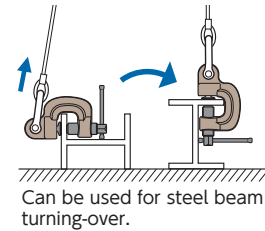


Example of use

⚠ Always lift a load at 2 or more points for safety.  
In case of lifting down, cannot be set to slanted shape part such as steel I beams.



Can be used as jig for pulling in welding or assembling operations.



Can be used for steel beam turning-over.

Visual safety check

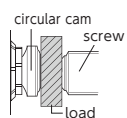


check marks are phosphorescent

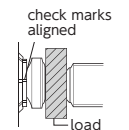
Tightening



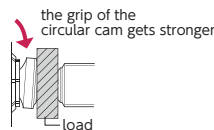
check marks get aligned



Before tightening



After tightening



When lifting

the grip of the circular cam gets stronger

Features

- All-purpose clamp that is especially ideal as lifting piece for chain blocks or hoists.
- The tightening mechanism with a screw and a circular cam (special spring type) provides sure clamping force on a load even when the load is landed or when vibrations occur during the lifting operation.
- High frequency quenching of special alloy steel gives greater toughness and durability.
- The main body has a champagne gold baked-on finish.
- The tightening check marks have phosphorescent (glow in the dark) paint for easy visual recognition.

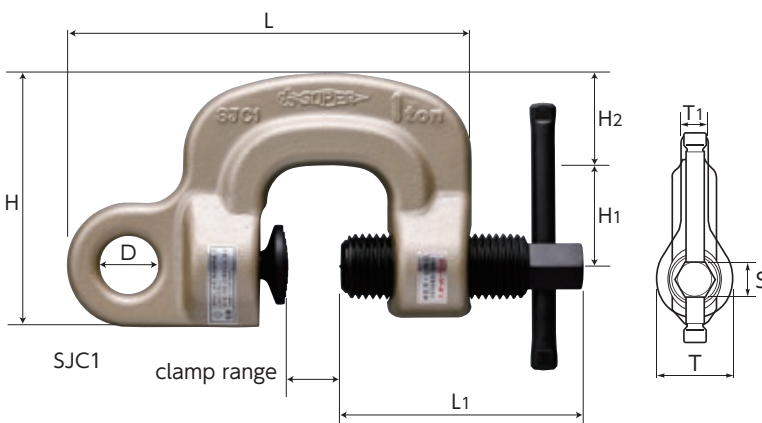
Item No.	Rated capacity (ton)	Clamp range (in)	Size (in)										N.W. (lb)
			L	L1	L2	H	H1	H2	D	T	T1	S	
SJC0.5S	0.5	0.00~0.98	6.22	3.50	2.91	4.23	1.93	1.77	1.06	1.73	0.63	0.67	3.75
SJC1S	1	0.00~1.57	7.87	4.76	3.58	4.67	2.52	1.77	1.26	2.05	0.71	0.83	6.61

Note : After having checked that the check marks are aligned, operate tightening over 18.44ft·lb.

» Normal Type

SJC

SCREW CAM CLAMP (Single Eye Type)



Example of use · Features

\* The features (except the twist cam with check marks) and the examples of use are the same as SJC-S.

Item No.	Rated capacity (ton)	Clamp range (in)	Size (in)									N.W. (lb)
			L	L1	H	H1	H2	D	T	T1	S	
SJC0.5	0.5	0.00~0.98	5.81	3.50	4.04	1.77	1.38	0.87	1.57	0.55	0.83	3.53
SJC1	1	0.00~1.57	7.17	4.29	4.53	1.77	1.65	1.02	1.81	0.63	0.83	5.73
SJC2	2	0.00~1.57	7.68	4.76	5.39	1.77	2.24	1.42	2.17	0.98	0.83	8.38
SJC3	3	0.00~1.57	8.64	5.35	6.10	1.97	2.56	1.77	2.36	1.18	0.83	10.58

Note : For the torque value of the screw tightening, operate tightening over 18.44ft·lb.