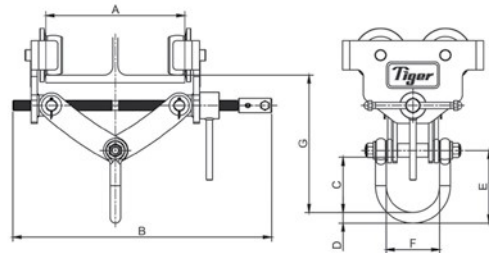
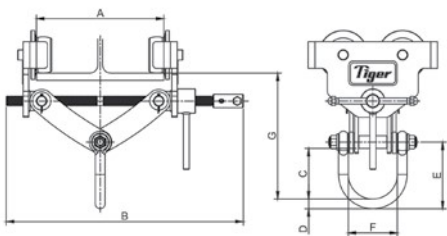
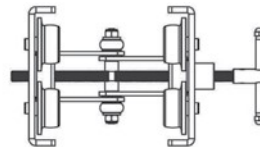
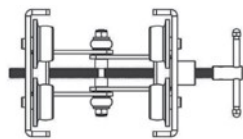


Adjustable Trolley

Plain APT

- Fitted with a screw spindle which allows easy adjustment and high clamping force to the various flange sizes within its capacity
- Designed to provide smooth and easy traversing
- The anti-drop plates design ensures extra safety, and also prevents damage to wheels when contacting end rail stoppers
- Wheels run on sealed ball bearings for smoother rolling with less effort and maintenance
- Plain Trolley Range from 1t to 10t. Geared trolley available as 1t to 10t as well.
- Operating temperature of -30°C to +50°C (-22°F to +122°F) (temperature range of -50°C to +50°C (-58°F to +122°F) available as an option)
- The 5:1 factor of safety allows for use with manual or powered hoists



1t - 6t

10t

Plain Adjustable Trolley

Product Code	Type	Capacity (tons, T)	Track width range (mm, in)	Dimensions (mm, in)						Min. curve ratio (m, ft)	Net Weight (lb)
				A	B	C	D	E	F		
APT-0100	Plain	1.0, 1.1	75-210, 2.95-8.27	391, 15.39	83, 3.27	16, .63	110, 4.33	81, 3.19	255-208, 10.04-8.19	1.0, 3.3	20.9
APT-0200	Plain	2.0, 2.2	75-210, 2.95-8.27	391, 15.39	94, 3.70	18, .71	123, 4.84	89, 3.50	276-227, 10.87-8.94	1.3, 4.3	29.8
APT-0300	Plain	3.0, 3.3	75-210, 2.95-8.27	403, 15.87	105, 4.13	22, .86	141, 5.55	112, 4.41	288-241, 11.34-9.49	1.5, 4.9	50.7
APT-0600	Plain	6.0, 6.6	105-305, 4.13-12.01	521, 20.51	111, 4.37	27, 1.06	151, 5.94	125, 4.92	358-290, 14.09-11.42	1.5, 4.9	78.3
APT-1000	Plain	10.0, 11.0	160-305, 6.30-12.01	606, 23.86	119, 4.69	32, 1.26	170, 6.69	83, 3.27	400-340, 15.75-13.39	2.7, 8.9	242.5