



APT/AGT

Tiger Adjustable Trolley

ORIGINAL INSTRUCTION GUIDE

- PLEASE PASS ONTO OPERATOR

Sticker here





Operator Instruction Guide



MUST READ BEFORE USE

1. It is important that this manual is read and fully understood and that all instructions are followed before using the trolley.
2. The trolley should be used by a trained and or experienced person who understands its use and will operate the unit in a responsible and safe manner.
3. Inspect the trolley for any damage or wear before use. Do not use the trolley if it is not in good working order. Continuous monitoring of the condition of the machine is an important safety consideration.
4. The supplier takes no responsibility for any consequential loss or damage if the trolley has been dismantled or altered by an unauthorised person, especially if original parts were not used to repair the machine.
5. The trolley described in this manual must not be used to lift, support or transport people in any way.
6. These trolleys are for manual operation only. Do not attempt to use a motorized mechanical device to operate the machine.
7. Check the trolley is of the correct profile, size and lifting capacity, or correctly adjusted, for the beam width and that it seats correctly on the beam flange.
8. Ensure the supporting structure is adequate for the full load that will be imposed and suitable for the application.
9. The adjusting screw must be fully hand tight before any load is applied; failure to do so could result in serious injury to persons or damage to equipment.
10. Do not attempt to overload the machine as this could cause damage to person or equipment.
11. Always ensure the trolley is used, maintained and repaired by a competently trained person.
12. Do not use the trolley in explosive environments unless an ATEX version has been supplied.
13. Always ensure the track is fitted with positive end stops which engage with the trolley frame or wheel treads.

Contents:

1. Safety Information	2	7. Troubleshooting	9
2. Function/Operation	3	8. Product Warranty and Warnings	10
3. Inspection, Examination and Maintenance	5	9. Technical Data	11
4. Hand Chain for Geared AGT Model	6	10. Exploded Diagrams	14
5. Transport, Storage, Decommissioning and Disposal	8	11. Inspection Log	18
6. Manufacturer Testing and Verification	8		

For details of the full Tiger product range visit our website: www.tigerlifting.com

Due to our policy of continual product development, dimensions, weights and specifications may change without prior notice.

© Copyright Tiger Lifting UK Limited. No part of this manual shall be reproduced, transmitted, transcribed, translated into any language human or electronic, stored in any electronic retrieval system, in any form without the written permission of Tiger Lifting UK Limited, Alnwick, UK



1. Safety Information

Tiger Lifting products have been built in accordance with state of the art and generally accepted engineering standards. Nonetheless, incorrect handling when using the products may cause dangers to life and limb of the user or third parties and/or damage to the trolley or other property. The operating company is responsible for the proper and professional instruction of the operating personnel. The personnel responsible for operation, maintenance or repair of the product must read, understand and follow these operating instructions. These instructions are intended to make the user familiar with the product and enable them to use it to the full extent of its intended capabilities. Acting in accordance with these instructions helps to avoid danger, reduces repair costs and downtime and increases the reliability and lifetime of the product.

The operating instructions must always be available at the place where the product is operated. Apart from the operating instructions and the accident prevention act valid for the respective country and area where the product is used, statutory regulations and procedures along with the commonly accepted regulations for safe and professional work must also be adhered to. The indicated protective measures will only provide the necessary safety if the product is operated correctly and installed and/or maintained according to the instructions. The operating company must be committed to ensure safe and trouble-free operation of the product.

If the product's ability to do a job, or to do so safely is in question - DON'T TRY IT.

Definitions

! WARNING

Indicates a potentially hazardous situation that, if not avoided, could result in death or serious injury. It may also be used to alert against unsafe practices.

Competent Person

The competent person should have appropriate, practical and theoretical knowledge and experience of the Tiger product which will enable them to detect defects or weaknesses and to assess their importance in relation to the safety and continued use of the unit. Competent persons may be, for example, the maintenance engineers of the manufacturer or the supplier. However, the company may also assign performance of the inspection to its own appropriately trained specialist personnel.

Trolley

A trolley is a device designed to attach to a suitable steel beam section to provide a means of suspension for a lifting appliance or load whilst also allowing it to traverse along a beam. Typically a hoist is attached, via a hook or a hoist connecting plate.

Beam

A beam is any structural steel section provided it is suitable for the purpose of lifting. Beams used with trolleys should be fitted with positive end stops which engage with the trolley frame or wheel treads.

Health and Safety at Work

All equipment must be maintained and tested to meet relevant statutory regulations when put to use. It is the responsibility of every company to ensure that their employees have been fully and properly trained in the safe operation of their equipment.

It is the owner's and user's responsibility to determine the suitability of a product for any particular use. It is recommended that all applicable industry, trade association, federal, state and local regulations are checked. Read all operating instructions and warnings before operation.



Equipment Labelling

The identification label/name plate details the product type, model, manufacturer, working load limit (WLL), serial number and the beam width range. The CE marking indicates compliance with the essential health and safety requirements of the Machinery Directive 2006/42/EC.

2. Function/Operation

The Tiger APT/AGT Adjustable Trolley can be used to suspend a lifting appliance or load and allow it to traverse along a beam. The APT is the plain trolley model which is moved along the beam by hand. The AGT is the geared trolley model which is moved along the beam by turning the hand chain.

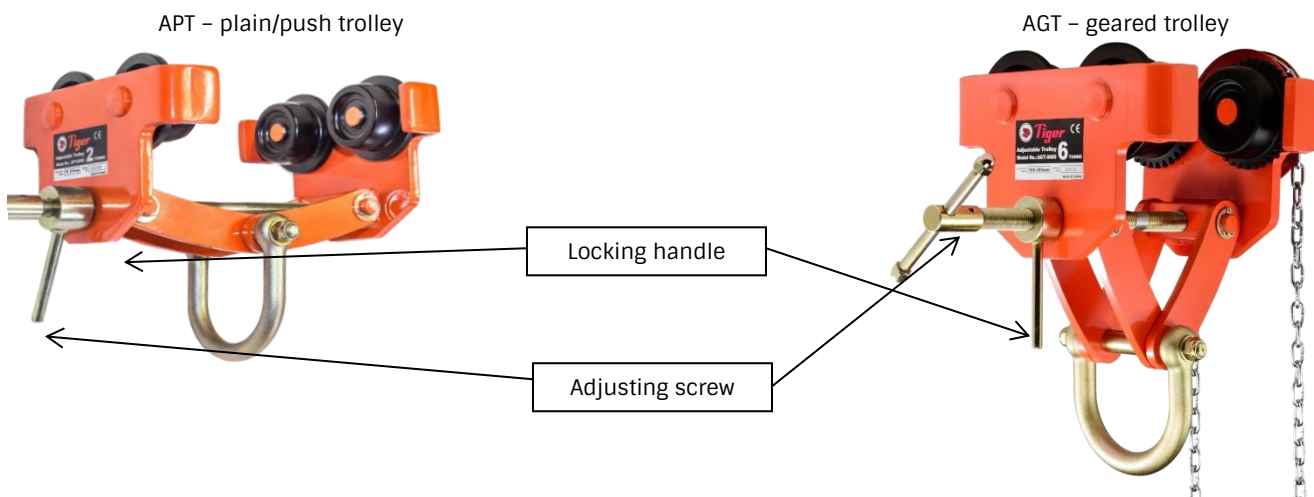
The Tiger APT/AGT is fitted with a screw spindle which allows easy adjustment to the various flange sizes within its capacity. It has been designed to provide smooth and easy traversing of a load along the beam. The anti-drop plates design ensures extra safety, and also prevents damage to wheels when contacting end rail stoppers. The wheels run on sealed ball bearings for smoother rolling with less effort and maintenance.

The working load limit specified on the label/name plate is the maximum load which can be applied to the product in service. The trolley must only be attached to structures which are approved and recommended to carry or sustain the maximum safe working loads which will be applied. These structures must be free from defects and have appropriate end stops fitted.

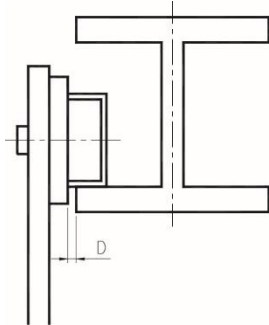
We advise that structural calculations are carried out on all beams and supporting steel work by qualified engineering departments to ensure safe operation.

! WARNING

All trolleys should be installed correctly onto the beam by a competent person and fully tightened by hand. All lifting operations should be fully risk assessed by a competent person before commencing any operation.



The APT/AGT trolley is easy to install. To open the trolley, undo the locking handle by turning it clockwise. Turn the adjusting screw anti-clockwise. Unscrew the trolley so it is wider than the beam. Fit the trolley onto the beam. To tighten the trolley onto the beam, turn the adjusting screw clockwise until it is the correct width to travel on the beam. The maximum distance between the edge of the beam and the inside of the wheel is shown below.



D =Maximum gap		
Product Code	Capacity(tonne)	D (Max.)
APT-0100/AGT-0100	1.0	3mm
APT-0200/AGT-0200	2.0	3mm
APT-0300/AGT-0300	3.0	3mm
APT-0600/AGT-0600	6.0	3mm
APT-1000/AGT-1000	10.0	5mm

Then fully tighten the locking handle so that the adjusting screw cannot turn. Failure to attach the trolley correctly could result in serious injury to persons or damage to equipment. Check the trolley is of the correct profile and size, or correctly adjusted, for the beam width and that it seats correctly on the beam flange. There should be no other contact between the beam and the trolley. Ensure the beam trolley is strong enough for the full load that will be imposed. Ensure the lifting appliance is compatible with the trolley and that hooks or other attachments fit freely into the shackle of the trolley.

Check the runway track/beam is level, has an even running surface and is fitted with positive end stops which engage with the trolley frame or wheel treads.

The trolley must be placed directly over the centre of gravity of the load. Under no circumstances must they be obliquely side loaded as this will cause them to tip, resulting in damage to the track or the trolley becoming detached from the track and falling.

For plain trolleys, push rather than pull suspended loads.

For geared trolleys the trolley is moved along the beam by turning the hand chain.

Always transport the load in the horizontal direction slowly, carefully and close to the ground, taking care to avoid swinging the load.

Before removing it from a beam, make sure there is no load on the trolley. Undo the locking handle by turning it clockwise then unscrew the adjusting screw anti-clockwise until the trolley is open sufficiently to be removed from the beam.

! WARNING

- Always** store and handle trolleys correctly.
- Always** inspect trolleys, blocks and accessories before use and before placing into storage.
- Always** ensure the wheel profile is suitable for the track.
- Always** check the trolley width is correctly set for the track.
- Always** ensure the track is fitted with positive end stops.
- Always** push rather than pull loads suspended on push/pull trolleys.

- Never** use defective trolleys, blocks or accessories.
- Never** expose trolleys to chemicals, particularly acids, without consulting the supplier.
- Never** expose a trolley directly to the elements, water spray, steam etc without consulting the supplier.
- Never** use a trolley with chipped or otherwise damaged wheel flanges.
- Never** obliquely side load a trolley.
- Never** use trolleys which are unidentified or uncertified for lifting applications.
- Never** replace bolts, shackles etc without consulting the supplier or an authorised repairer.
- Never** throw or drop trolleys.





- Never** use trolleys on damaged or distorted beams.
- Never** force or wedge hooks of lifting appliances into the attachment shackle.
- Never** attach a load, hoist or any other object to any part of the trolley other than the anchor point.
- Never** allow a load attached to the trolley to swing or spin unintentionally.
- Never** work under suspended loads.

3. Inspection, Examination and Maintenance

According to national and international accident prevention and safety regulations (for example LOLER for the UK), hoisting equipment must be inspected:

- in accordance with the risk assessment of the operating company
- prior to initial operation
- before the unit is put into service for any subsequent use
- after substantial changes
- however, at least once per year, by a competent person.

Note: Actual operating conditions (e.g. operation in galvanizing facilities) can dictate shorter inspection intervals.

The intervals of inspection must be determined by the individual application and are based upon the type of service to which the trolley will be subjected.

Prior to initial operation, before it is put into operation again and after substantial changes

Before the unit is put into operation, for the first time, for a subsequent use or after substantial repair or modification, unless you have received physical evidence that a thorough examination has been carried out which shows that the trolley is safe to use, it should be thoroughly examined by a competent person in compliance with applicable statutory regulations.

Typical pre-use inspection will consist of a visual inspection and a function check. These inspections are intended to establish that the trolley is in a safe condition, has been set up appropriately and is ready for operation, and that any defects or damage are detected and eliminated.

Inspect the trolley for operation warning notices and legibility. Deficiencies should be noted and brought to the attention of supervisors. Be sure defective trolleys are tagged and taken out of service until repairs are made. Under no circumstances should you operate a malfunctioning trolley.

The following checks should be carried out before starting work:

- Inspect the unit for visual defects, e.g. deformations, damage, cracks, wear and corrosion marks.
- Check that the name plate/label showing the trolley capacity is attached and clearly legible.
- Check lubrication and lubricate if necessary.
- Examine the wheel treads and flanges for wear and damage.
- Check for insecure wheels and axle pins.
- Examine the load shackle and anchor pin for damage and distortion.
- Check for worn or chipped drive gears.
- Examine side frame for wear, damage and distortion.
- Examine adjusting screw for damaged threads and distortion.
- Examine adjusting screw handle for distortion and loose bar end stops.
- Examine locking handle for damage and distortion.
- Check for loose or missing nuts and for missing split pins.
- Examine for corrosion.
- Examine for illegible markings.
- In the case of a trolley in-situ, examine the beam to which the trolley is attached for any distortion.



In the event of any defects refer the trolley to a Tiger distributor or Competent Person for thorough examination.

Inspect the supporting structure for visual defects, e.g. deformations, damage, cracks, wear and corrosion marks. Check the runway track/beam is level, has an even running surface and is fitted with positive end stops which engage with the trolley frame or wheel treads.

Check that the trolley and the load are correctly attached. The selection and calculation of the appropriate supporting structure are the responsibility of the operating company.

For AGT geared trolley models

AGT geared trolley models are supplied with a hand chain operated gear. Inspection of the hand chain must be included in any inspection of the AGT trolley. If the unit's hand chain has been supplied with a Tiger Hand Chain Joiner link, make sure that it has been fitted correctly and is in good working order. See Chapter 4 – Hand Chain for Geared AGT Model for more information.

Thorough Examination

Thorough Examination may be needed at several points during the life of the unit: on initial use or following installation, periodically during its life, or following exceptional circumstances. This trolley must be subject to periodic thorough examination in compliance with national statutory regulations. The intervals between periodic thorough examinations must consider the following:

- The condition of the unit.
- The environment in which it is to be used.
- The number of lifting operations and loads lifted.

Reports of thorough examination can be based on statutory maximum intervals or via a written examination scheme based on risks and hazards associated with use. i.e.:

- Annual Inspection.
- Period defined by examination scheme.
- Following exceptional circumstance.

An Inspection Log is included in Chapter 11 for making a dated record of any required inspections.

Maintenance

Maintenance of the trolley should include the following:

- Clean the trolley.
- Lubricate any moving parts including exposed trolley drive pinion and wheel teeth for geared trolleys.
- Keep the running surface of wheels and contact surface of the track free of any contamination including lubricants.
- Correctly secure all fastenings.

! WARNING

Use only Tiger supplied replacement parts. Parts may look alike however Tiger parts are made of specific materials, processed to achieve specific properties or precisely machined to fit only Tiger trolleys. Any repairs to this trolley must be undertaken by a suitably qualified and competent person.

4. Hand Chain for Geared AGT Model

Tiger hand chain is 5mm × 24mm and either galvanised hand chain or corrosion protected hand chain.



Only fit hand chains which have been approved by the manufacturer. Non-compliance with this specification will render the legal warranty or guarantee void with immediate effect. See Hand Chain Maintenance below for more information on maintenance of the hand chain.

If the unit's hand chain has been supplied or subsequently fitted with a Tiger hand chain joiner link (HC-050-JL) make sure that it has been fitted correctly and is in good working order.

Make sure that the HC-050-JL has been fitted in the correct orientation as shown in figure 1 below. To achieve this, the HC-050-JL stainless steel rivet heads must be facing the outside of the hand wheel and the joiner link must sit within the hand wheel pocket as seen in figure 2 below:



Figure 1

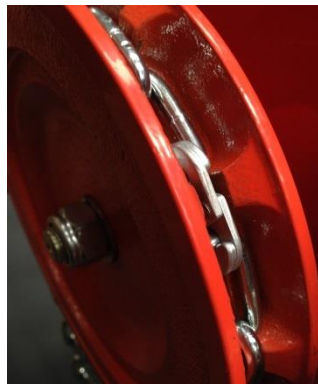


Figure 2

Regularly inspect the HC-050-JL. In the event of any defects remove from service and refer the hoist to a competent person for thorough examination:

- Wear: make sure that the two stainless steel rivet heads are complete and have not been worn away or corroded, ensure the rivets are secure and tight and have a solid hold of both plates.
- Damage: ensure the link has not been damaged and that both sides of the link join together to form a flat surface without any signs of distortion by being: bent, twisted, cracked, corroded or stretched.

If the rivets are to be replaced during inspection or maintenance, the dimensions are 2.4mm x 6.0mm and must conform to EN ISO 15983 and the material is stainless steel. These and the joiner links are available as a spare part from Tiger.

Hand Chain Maintenance

Hand Chain should be cleaned, inspected and checked for damage. Hand chain, used on geared trolleys, does not normally require lubrication.

Changing the length of the hand chain

The hand chain may contain an unwelded link. This link can be placed in a vice and twisted open to facilitate changing chain or chain length. Please note that opening and closing of the connecting link more than twice is not recommended.

The hand chain may contain a special riveted Tiger hand chain joining link (HC-050-JL). This link can be removed by drilling the rivets out.

Use a new link to close the loose chain ends by bending it or use a Tiger hand chain joiner link and stainless steel rivets available from your Tiger supplier. For extending the hand chain, two new chain links or Tiger hand chain joiner links are required. See above for information about the orientation of the Tiger hand chain joiner link.



Note: Always remove or add an even number of chain links.

Note: Care must be taken to ensure that there is no twist in the hand chain loop.

Replacing the hand chain

Remove the hand wheel by unscrewing the pinion nut then unscrew the hand wheel from the pinion shaft, once the hand wheel is removed, replace the hand chain with a new hand chain loop. Replace the hand wheel and screw back onto the pinion shaft and then replace the pinion nut, screwing this back on to the pinion shaft.

If the trolley is fitted with removable hand chain retaining plates they are removed by unbolting the two bolts from each plate and then the retaining plates can be removed. This will allow the hand chain to be easily removed from the hand wheel. When the hand chain has been replaced the retaining plates can be reassembled.

5. Transport, Storage, Decommissioning and Disposal

Transporting the unit:

- Do not drop or throw the unit, always deposit it carefully.
- Use suitable transport means. These depend on the local conditions.

Storing or temporarily taking the unit out of service:

To ensure the continuing integrity of the unit you should store the unit in conditions that do not lead to damage or deterioration. Therefore:

- Inspect trolleys and accessories before placing into storage.
- **Never** return damaged trolleys to storage.
- The unit should be secured against unauthorised and unwarranted use.
- Store the unit in a clean and dry place.
- Protect the unit including all accessories against contamination, humidity and damage by means of a suitable cover.
- Protect against corrosion.
- Wipe off all dirt and water.
- A light oil film should be applied to the adjusting bar.
- If the unit is to be used again after it has been taken out of service, it must first be inspected again by a competent person.

Disposal

When the product comes to the end of its lifecycle, after taking the unit out of service, recycle or dispose of the parts of the unit respecting local and national environmental regulations.

6. Manufacturer Testing and Verification

This product was manufactured under our single-unit control of quality and was passed with strict inspection in accordance with our inspection standards.

Capacity (tonne)	WLL (kg)	Test Load (kg)
1	1000	1500
2	2000	3000
3	3000	4500

Capacity (tonne)	WLL (kg)	Test Load (kg)
6	6000	9000
10	10000	15000

The operating temperature range is -30°C (-22°F) to +50°C (+122 °F) unless the unit has been specifically supplied for the range -50°C (-58°F) to +50°C (+122 °F).



Declaration of Conformity

Tiger APT/AGT Trolleys have a 5:1 factor of safety. They are tested in line with the requirements within applicable sections of the European standard EN 13157: 2004+A1:2009 and the Australian standard AS1418.2. All items comply with the essential health and safety requirements of the Machinery Directive 2006/42/EC. Tiger trolleys are third party verified by SGS Certificate Number MDC 1302.

7. Troubleshooting

Problem	Cause	Solution
Trolley Seized	Wear and tear	Lubricate any moving parts/Replace trolley
	Poor maintenance and inspection	Refer to manual for maintenance and inspection details
	Poor storage and handling	Refer to manual for storage information.
	Trolley is overloaded	Load trolley to rated capacity only
Difficulties adjusting trolley to beam	Damaged or distorted adjusting screw.	Replace damaged components.
Hand chain catches or jams (for AGT geared trolley)	Damaged hand chain, hand chain wheel, pinion.	Replace damaged components or replace trolley.
	Poor maintenance and inspection.	Lubricate exposed trolley drive pinion and wheel teeth.
	Hand chain not installed properly (twisted or kinked).	Remove hand chain and re-install.



8. Product Warranty and Warnings

Definitions

'Customer' means the individual, firm, company or other party with whom the Company contracts;

'Company' means Tiger Lifting UK Limited or Woo Sing Industrial Co., Ltd;

'Contract' the contract between the Company and the Customer for the sale and purchase of this product;

'Defective Goods' goods, parts or materials, which by reason of fault or incorrect design or workmanship, are found to be defective or fail or are unable to perform in accordance with a Contract;

One Year Limited Warranty

The Company makes every effort to assure that its products meet high quality and durability standards and extends the following warranty to the Customer of new products manufactured by the Company:

1. The Company warrants that this product, when shipped, shall be free from defects in materials and workmanship under normal use and service and the Company shall, at its election, repair or replace free of charge any Defective Goods, provided that all claims for defects under this warranty shall be made in writing immediately upon discovery and, in any event, within one (1) year from the date of purchase of this product by the Customer and provided, further, that Defective Goods shall be kept for examination by the Company or its authorised agents or returned to the Company or an authorised service centre upon request by the Company.
2. The Company does not warrant components of products provided by other manufacturers. However to the extent possible, the Company will assign to the "Purchaser" applicable warranties of such other manufacturers.
3. Except for the repair or replacement mentioned in (1.) above, which is the Company's sole liability and Customer's exclusive remedy under this warranty, the Company shall not be responsible for any other claims arising out of the purchase and use of this product, regardless of whether the Customer's claims are based on breach of contract, tort (including negligence), breach of statutory duty, or otherwise, including claims for any loss of profit, goodwill or business opportunity or any indirect or consequential loss arising under or in connection with the Contract.
4. This one year limited warranty is conditional upon the installation, maintenance and use of this product pursuant to the product manuals prepared in accordance with content instructions by the Company. The warranty on this product does not apply to defects due directly or indirectly to misuse, abuse, negligence or accidents. This warranty does not apply if the product has been subjected to improper fittings, alignment or maintenance.
5. The Company shall not be responsible for any loss or damage caused by transportation, prolonged or improper storage or normal wear and tear of this product or for loss of operating time.
6. This warranty shall not apply to this product if it has been fitted with or repaired with parts, components or items not supplied or approved by the Company or which have been modified or altered.
7. The Company limits all implied warranties to the period specified above from the date the product was purchased by the Customer.
8. Except as stated herein, any implied warranties or merchantability and fitness are excluded.

If our inspection discloses a defect, the Company will repair, replace the product or refund the purchase price, if we cannot readily or quickly provide a repair or replacement and if you are willing to accept such refund. The Company will return repaired or replacement products at The Company's expense, but if it is determined there is no defect, or that the defect resulted from causes not within the scope of Tiger Lifting's warranty, then the Customer must bear the cost of storing and retrieving the product.

! WARNING

**The use of this product is beyond the control of Tiger Lifting. The warranty of this product is limited to the replacement cost of this product should it be found to be defective in material and/or workmanship. The warranty is void if the trolley is damaged, worn or used improperly. Normal wear and tear is not considered grounds for replacement.
The Tiger Lifting product warranty does not apply where there has been excessive overloading of the trolley.**

Disclaimer

We believe that the information in this document, including technical information and any advice, is reliable although we give no guarantee as to its accuracy or completeness. The user of our products must determine if the product, either used alone or conjunction with other products, is suitable for their purpose and assumes all risk and liability in connection with those decisions. We have made every effort to make sure this document is accurate. The information contained in this document does not form part of any contract.

Please also refer to our terms and conditions which can be found at: www.tigerlifting.com/terms-conditions/



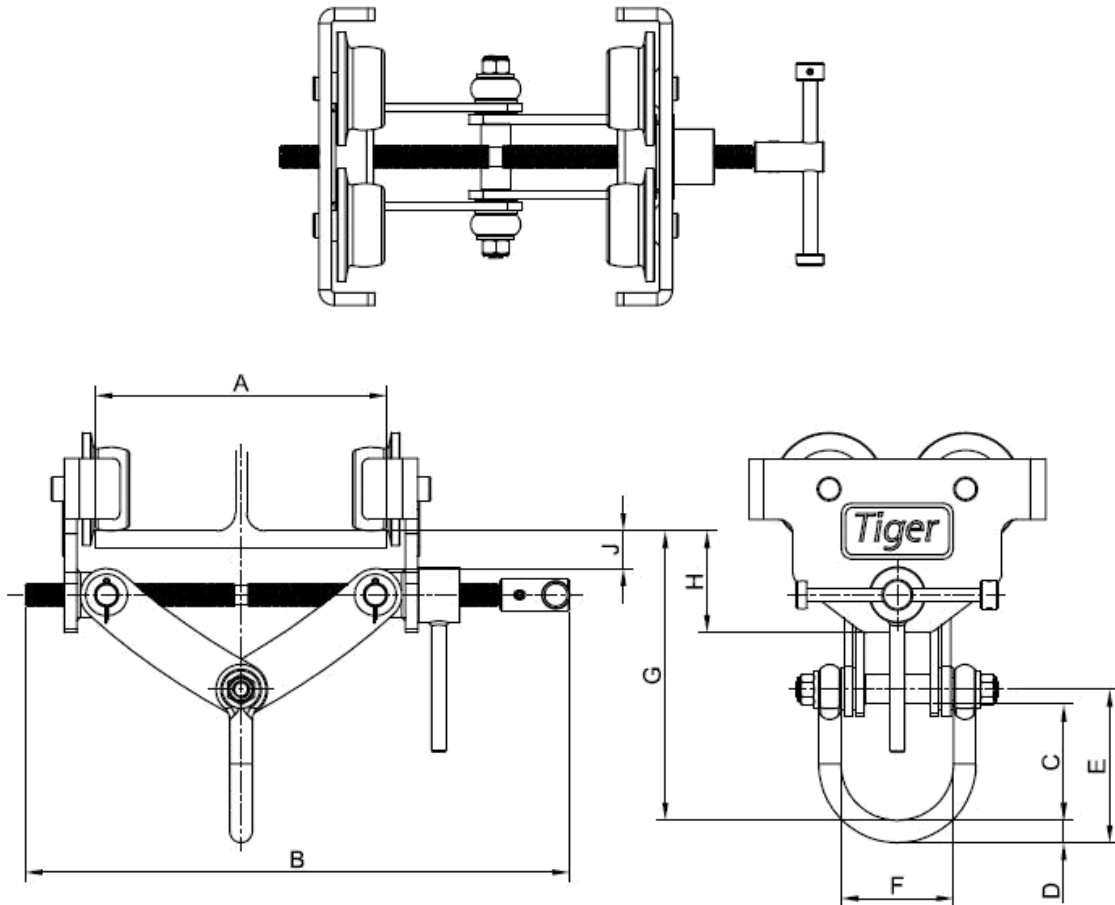
9. Technical Data

Product Code	Capacity (tonne)	A Track width range (mm)	Dimensions (mm)								Min. curve ratio (m)	Weight (kg)
			B	C	D	E	F	G	H	J		
Plain/push trolleys												
APT-0100	1.0	75-210	391	83	16	110	81	255-208	73	27	1.0	9.5
APT-0200	2.0	75-210	391	94	18	123	89	276-227	79	38	1.3	13.5
APT-0300	3.0	75-210	403	105	22	141	112	288-241	99	35	1.5	23.0
APT-0600	6.0	105-305	521	111	27	151	125	358-290	115	46	1.5	35.5
APT-1000	10.0	160-305	606	119	32	170	83	407-352	157	33	2.7	118.0
Geared trolleys												
AGT-0100	1.0	75-210	391	83	16	110	81	255-208	73	27	1.0	13.0
AGT-0200	2.0	75-210	391	94	18	123	89	276-227	79	38	1.3	17.0
AGT-0300	3.0	75-210	403	105	22	141	112	288-241	99	35	1.5	28.5
AGT-0600	6.0	105-305	521	111	27	151	125	358-290	115	46	1.5	40.0
AGT-1000	10.0	160-305	606	119	32	170	83	407-352	157	33	2.7	221.0

*Standard geared trolley hand chain length - 2.5m. We can change the length to suit your requirements.

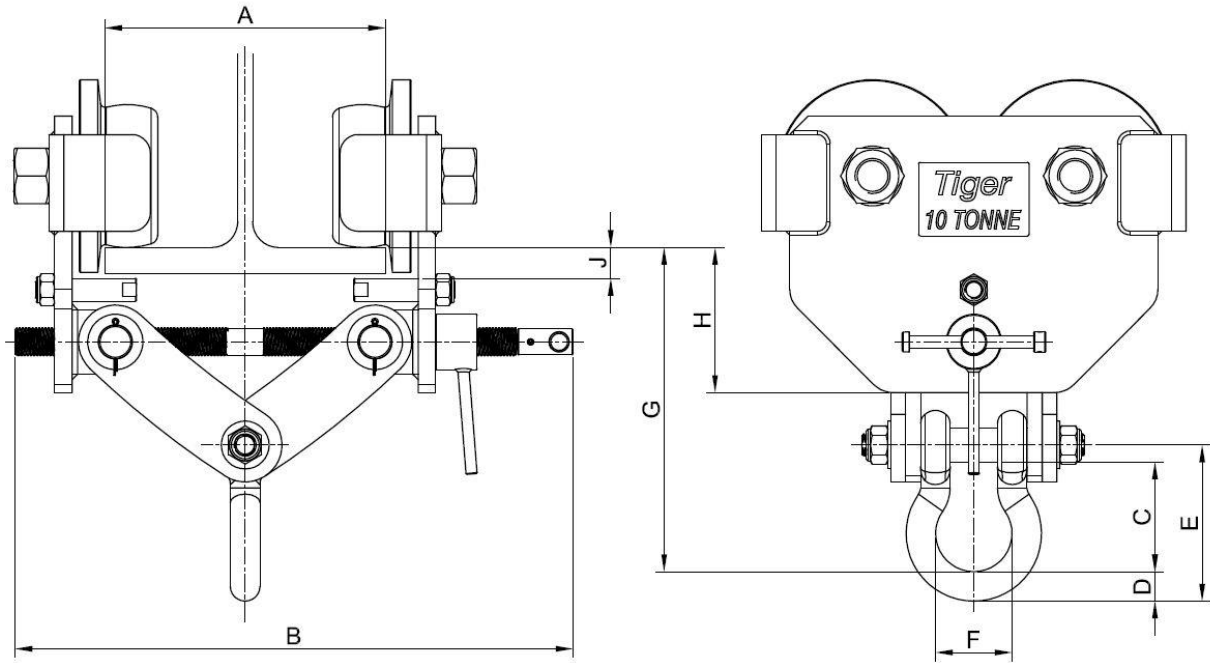
*For extremely thick beams, please ask for further details about removing the anti-tilt bars.

1t - 6t APT Plain/Push Trolleys



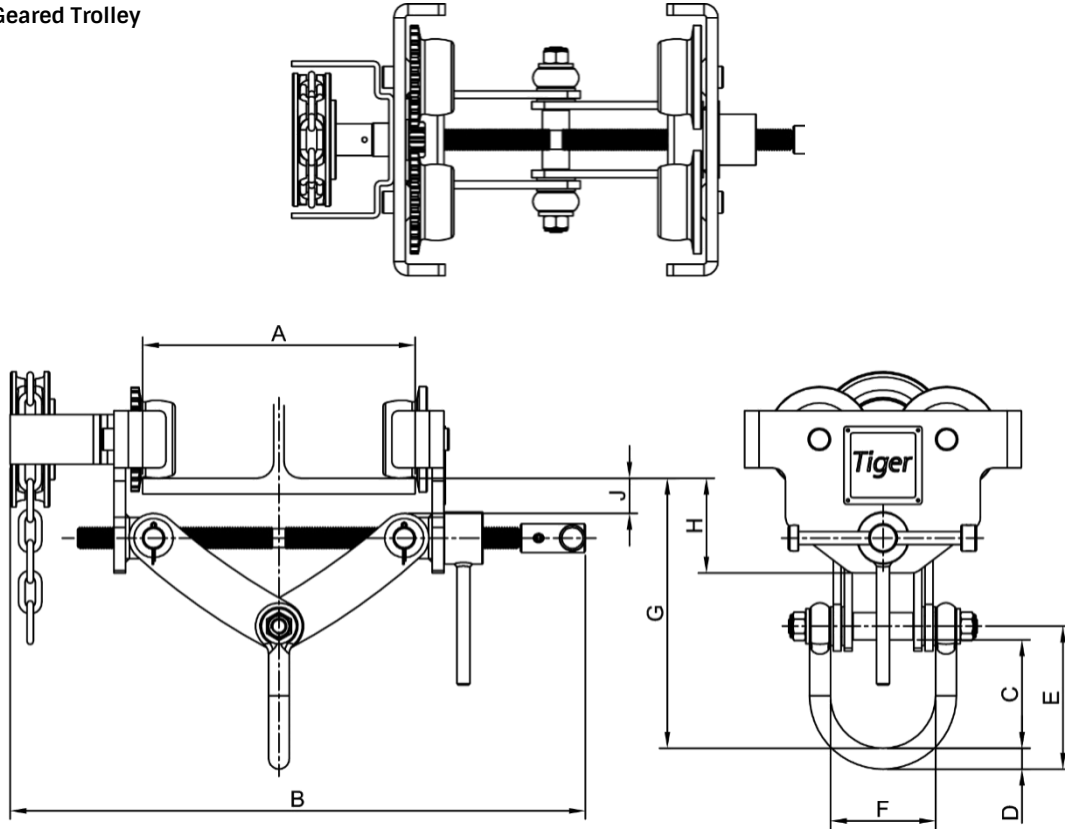


10t APT Plain/Push Trolley

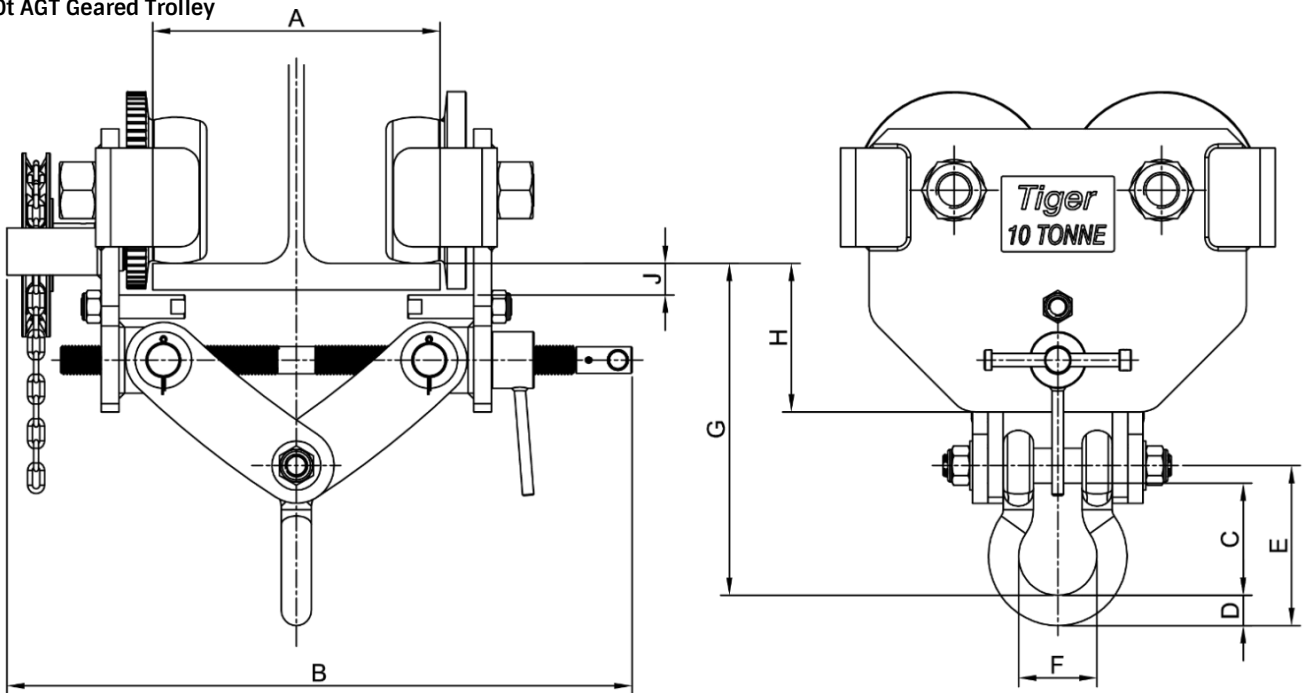




1t - 6t AGT Geared Trolley



10t AGT Geared Trolley

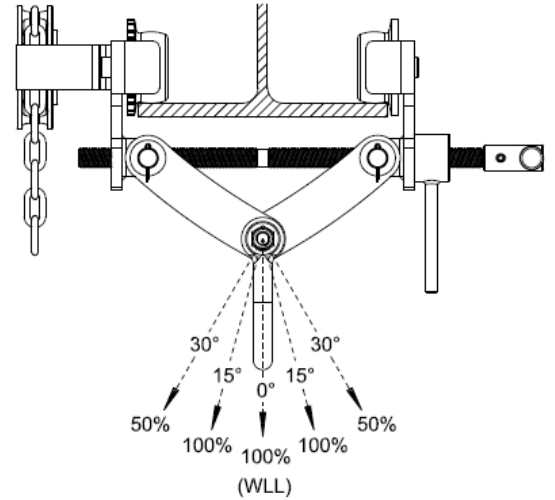


Due to our policy of continual product development, dimensions, weights and specifications may change without prior notice.





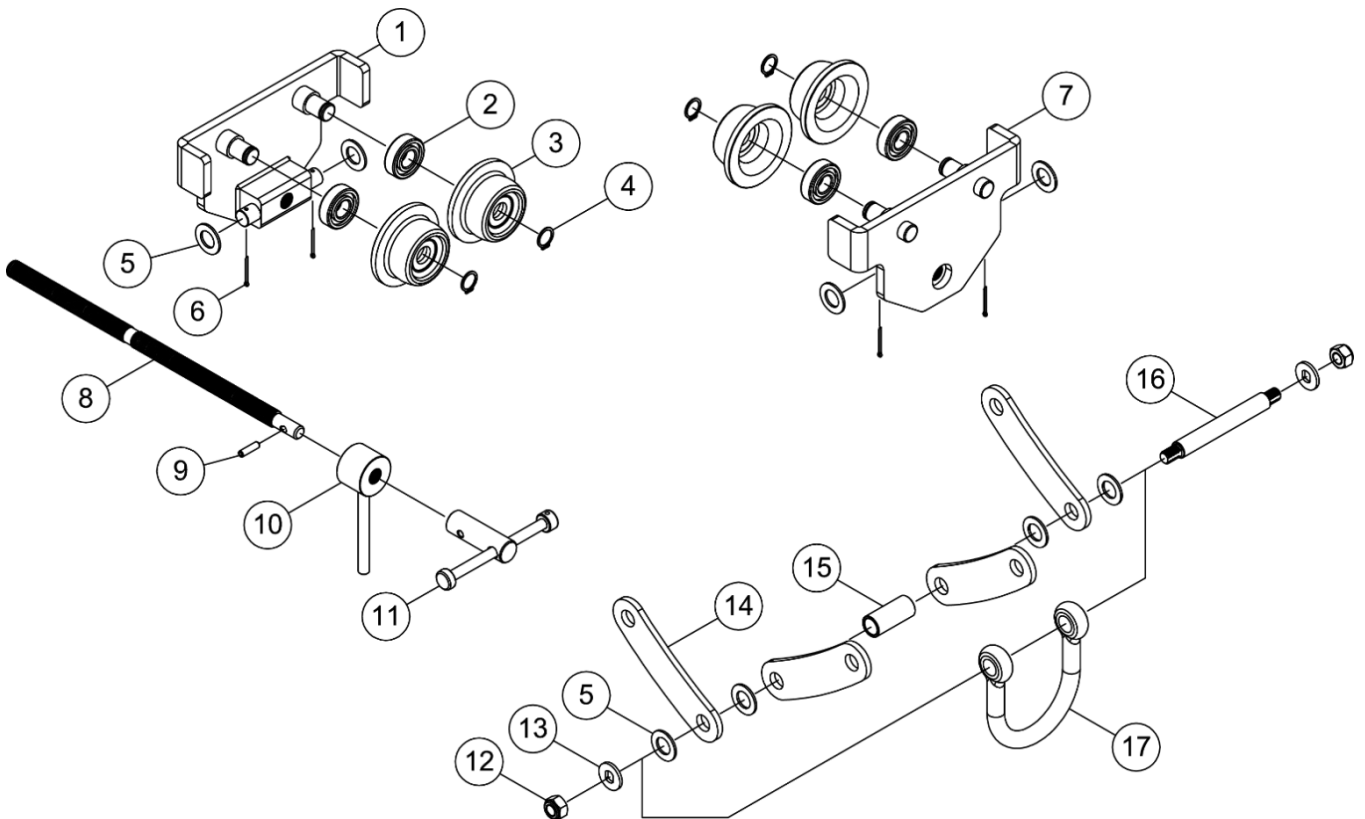
Deration to apply for using at angles away from the vertical



10. Exploded Diagrams

For APT models APT-0100, APT-0200, APT-0300, APT-0600

The following diagram is intended to clarify terms that appear in the Product Operation and the Inspection and Maintenance chapters.

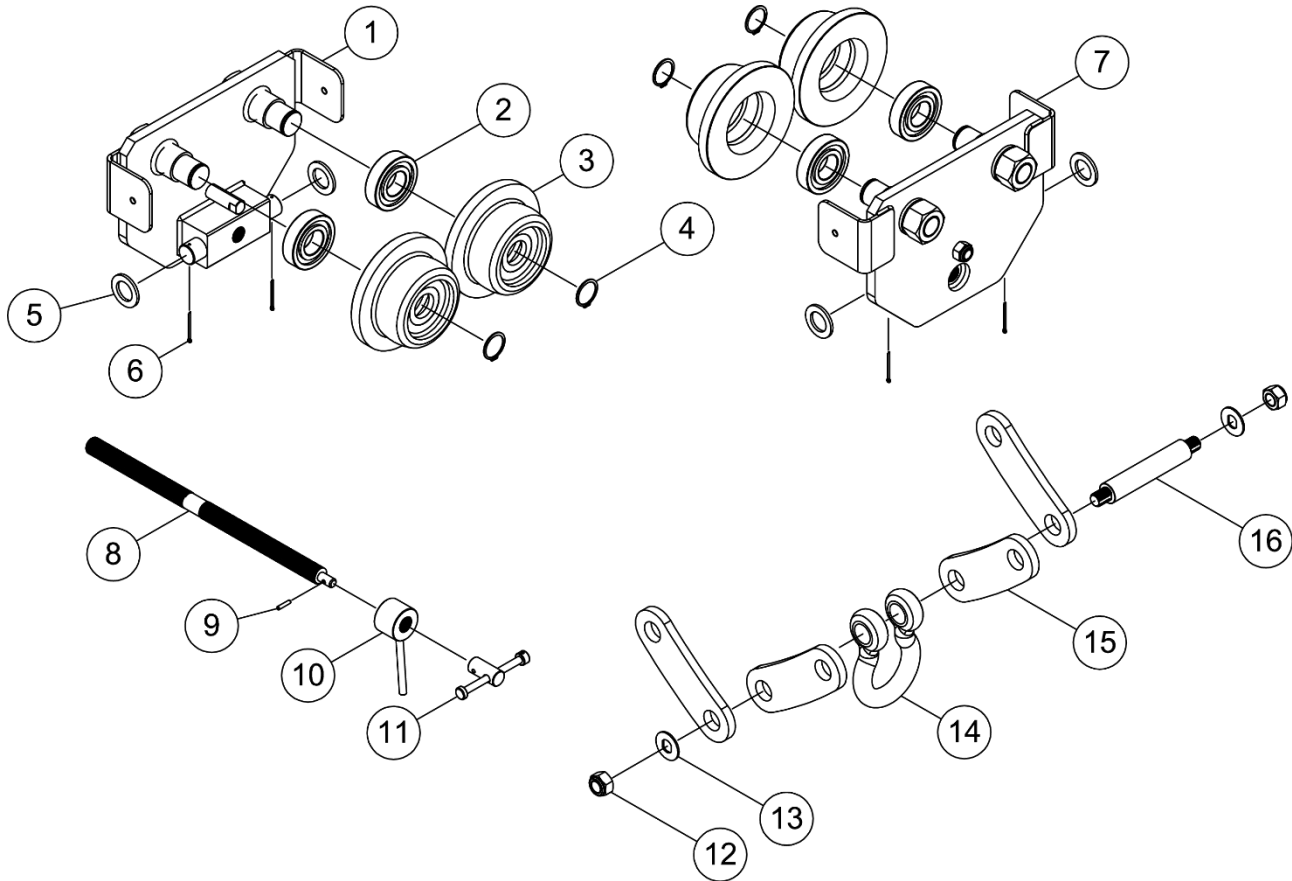


Part No.	Part Name	Part No.	Part Name	Part No.	Part Name	Part No.	Part Name
1/7	Side frame with Spindle block	5	Washer	10	Locking handle	14	Hanging plates
2	Bearing	6	Split pin	11	Handle assembly	15	Protection Sleeve
3	Wheel	8	Adjusting screw	12	Nut	16	Anchor pin
4	Snap ring	9	Securing pin	13	Keyway Washer	17	Shackle



For APT model APT-1000

The following diagram is intended to clarify terms that appear in the Product Operation and the Inspection and Maintenance chapters.

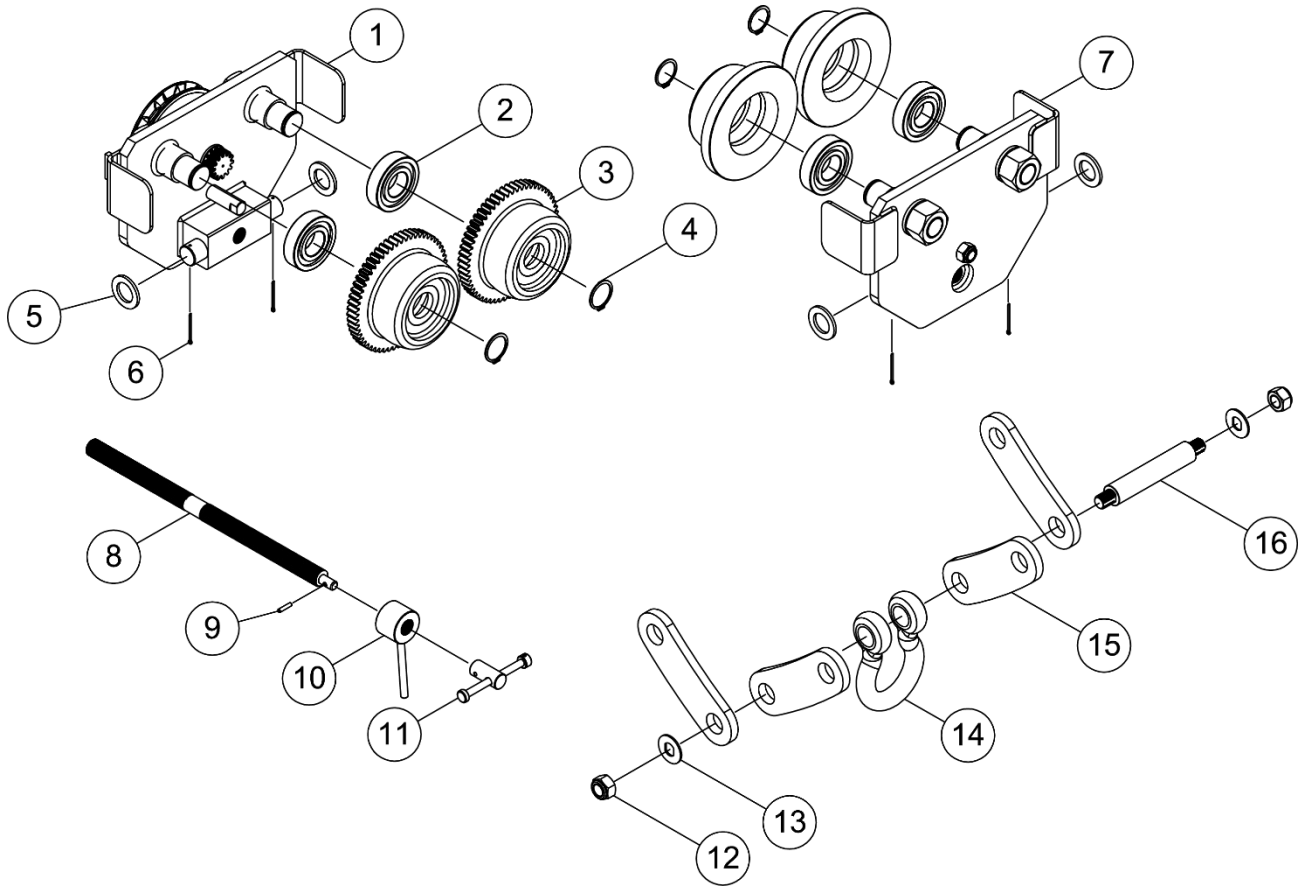


Part No.	Part Name	Part No.	Part Name	Part No.	Part Name	Part No.	Part Name
1/7	Side frame with Spindle block	5	Washer	10	Locking handle	14	Shackle
2	Bearing	6	Split pin	11	Handle assembly	15	Hanging plates
3	Wheel	8	Adjusting screw	12	Nut	16	Anchor pin
4	Snap ring	9	Securing pin	13	Keyway Washer		



For AGT models AGT-0100, AGT-0200, AGT-0300, AGT-0600

The following diagram is intended to clarify terms that appear in the Product Operation and the Inspection and Maintenance chapters.

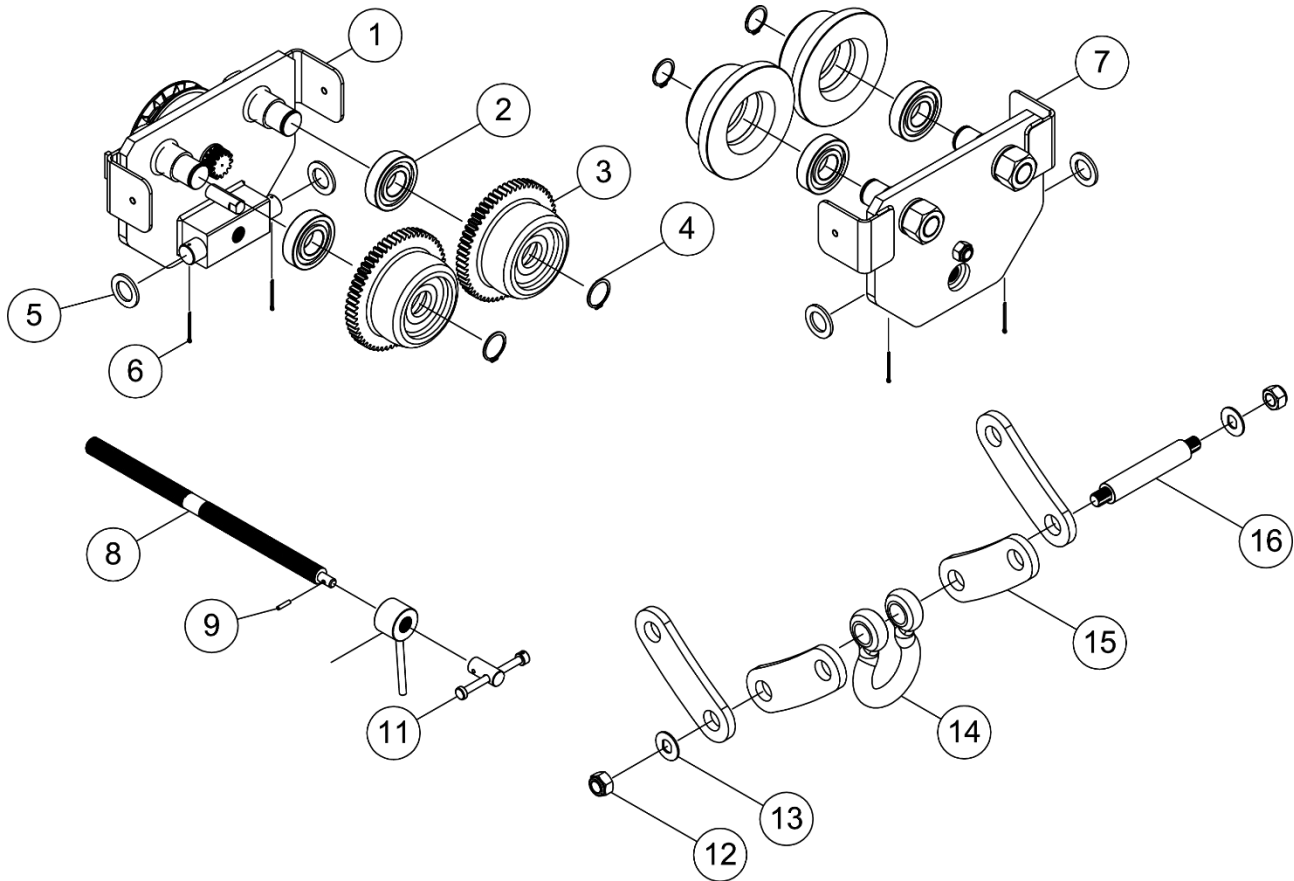


Part No.	Part Name	Part No.	Part Name	Part No.	Part Name	Part No.	Part Name
1/7	Side frame with Spindle block	5	Washer	10	Locking handle	14	Shackle
2	Bearing	6	Split pin	11	Handle assembly	15	Hanging plates
3	Wheel	8	Adjusting screw	12	Nut	16	Anchor pin
4	Snap ring	9	Securing pin	13	Keyway Washer		



For AGT model AGT-1000

The following diagram is intended to clarify terms that appear in the Product Operation and the Inspection and Maintenance chapters.



Part No.	Part Name	Part No.	Part Name	Part No.	Part Name	Part No.	Part Name
1/7	Side frame with Spindle block	5	Washer	10	Locking handle	14	Shackle
2	Bearing	6	Split pin	11	Handle assembly	15	Hanging plates
3	Wheel	8	Adjusting screw	12	Nut	16	Anchor pin
4	Snap ring	9	Securing pin	13	Keyway Washer		



 **Tiger HQ Taiwan**

Woo Sing Industrial Co., Ltd
6F, No. 118-1,
ZhongZheng Road
Shilin Dist.,
Taipei City
11145
Taiwan

☎ +886-2-2831 3035
📠 +886-2-2834 0188
✉ info@tigerlifting.com.tw

 **Tiger North America**

Tiger Lifting NA
38381 N. Robert Wilson Rd.
Gonzales, Louisiana
70737
USA

☎ +1 225-647-1312
☎ +1 833-681-3057
✉ sales@tigerliftingna.com

www.tigerlifting.com



 **Tiger UK and Europe**

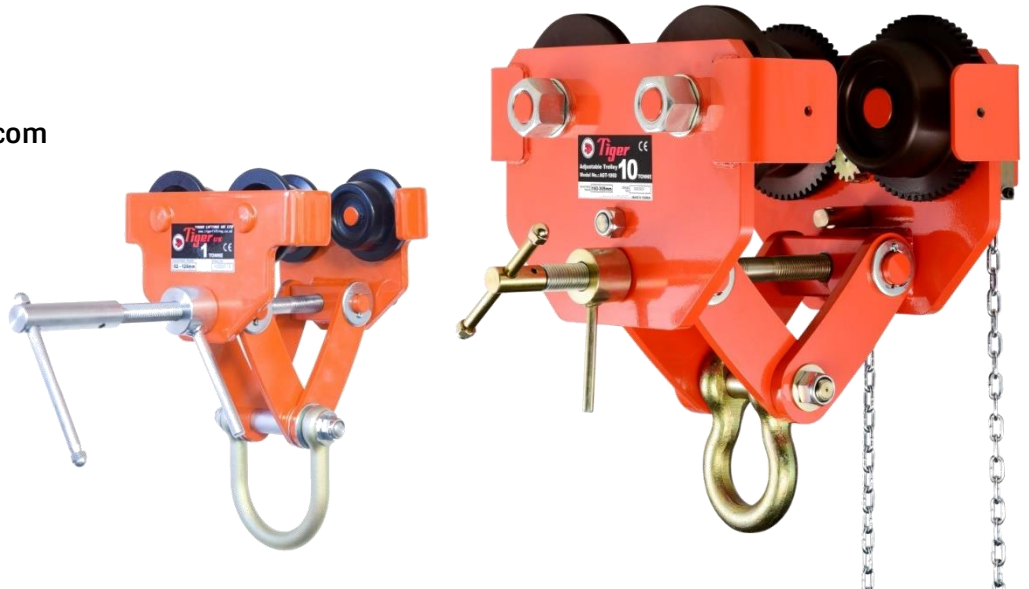
Tiger Lifting UK Limited
Unit 1, Greensfield Industrial Estate,
Willowburn Avenue,
ALNWICK,
NE66 2DG
UK

☎ +44 1665 605130
📠 +44 1665 603185
✉ info@tigerlifting.com

 **Representative in Europe**

 **Tiger China – Sales Office**

☎ +86 (0) 21 3133 2638
☎ +86 138 2377 3024
✉ info@tigerlifting.com.cn



© Copyright Tiger Lifting UK Limited. No part of this manual shall be reproduced, transmitted, transcribed, translated into any language human or electronic, stored in any electronic retrieval system, in any form without the written permission of Tiger Lifting UK Limited, Alnwick, UK

www.tigerlifting.com



Manual Tiger APT-AGT En 201811 v2.2