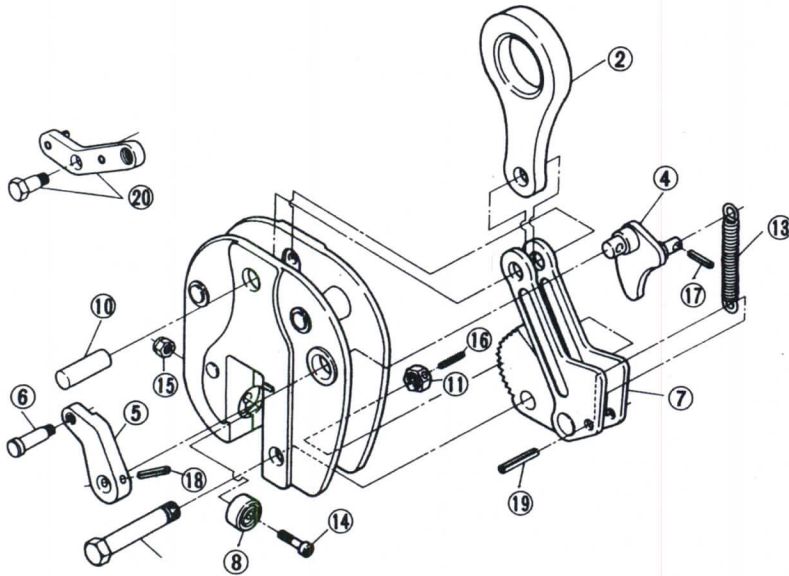


Replacement parts and fittings (Model : SVC-L)



Part No.	Part Name	Item No.
SHACKLE ASSEMBLY		SVH
2	Shackle	SVCH
10	Support pin for shackle	SVCY
CAM ASSEMBLY		SVT
7	Cam · Link	SVCT
19	Spring pin	SVCU
CAM SUPPORT PIN ASSEMBLY		SVK
11	Support bolt for cam	SVCK
11	Support nut for cam	
16	Spring pin	SVCO
PAD ASSEMBLY		SVP
8	Pad	SVCP
14	Hex. socket head cap screw	SVCV
15	Nylon nut	
LOCK LEVER ASSEMBLY		SVG
4	Lock	SVCL
5	Lock lever	SVCF
6	Lock lever grip	SVCG
17	Spring pin (For lock)	SVCW
18	Spring pin (For lever)	SVCQ
13	Spring	SVCS
20	Lever for remoto control	SVCR

Replacement procedure for cam and pad

Disassembling

A) PAD

1. Take out by loosening Cap screw ⑭ and Nut ⑮ after raised lock lever ⑤ into upper position.

B) CAM

1. Pull out the Spring pin ⑯ for Bolt and Nut ⑪.
2. Take out Bolt, Nut ⑪.
3. Pull up the Shackle ② and bring the shackle support pin ⑩ into line with hole of Main body, and pull out the Pin ⑩.
4. Lay down the main body. Pull out the Spring pin ⑱ in the cam (link) side on its half way and take out the Spring ⑬.
5. Put Cam and Link ⑦ on the body and pull out the Spring pin ⑱.

Reassembling

A) CAM

1. Install the Spring ⑬ to Cam and Link ⑦ with Spring pin ⑱ and insert them into the body. Check the Shackle support pin ⑩ fits into the Link ⑦.
2. Lay down the body setting the big hole side to up.
3. Line up the holes of Shackle ② and Link ⑦, then insert the Shackle support pin ⑩ to the hole through the hole of body.
4. Take down the Shackle ②. Line up holes of Cam ⑦ and body, and insert Bolt ⑪. Then set upright the body and tighten the Nut ⑮.
5. Strike the Spring pin ⑯ into the hole on Bolt ⑪ and Nut ⑮.

B) PAD

1. Insert a new pad into main body and tighten with the Cap screw ⑭ and Nut ⑮.