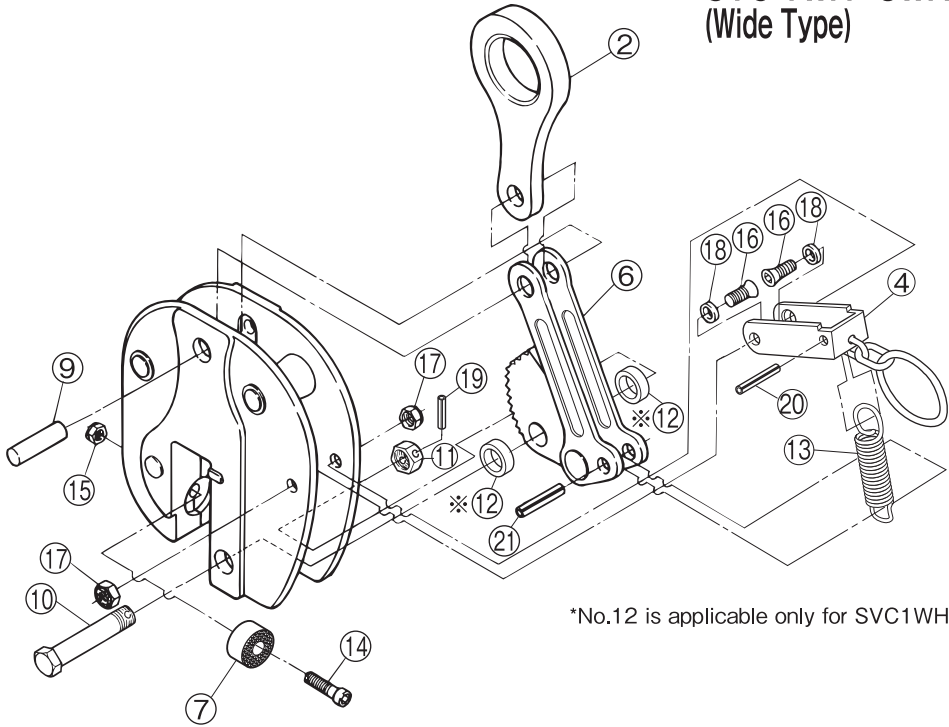


REPLACEMENT PARTS AND ASSEMBLIES

**SVC 0.5H~5H
SVC 1WH~5WH
(Wide Type)**



*No.12 is applicable only for SVC1WH.

| Part No. | Part Name | Item No. | Set Q'ty | Part No. | Part Name | Item No. | Set Q'ty |
|------------------|---------------------|----------|----------|--------------|--------------------|----------|----------|
| SHACKLE ASSEMBLY | | | | PAD ASSEMBLY | | | |
| 2 | Shackle | SVCH | 1 | 7 | Pad | SVCP | 1 |
| 9 | Shackle support pin | SVCY | 1 | 14 | Hex hole bolt | SVCV | 1 |
| CAM ASSEMBLY | | | | 15 | Nylon nut | | 1 |
| 6 | Cam, Link | SVCT | 1 | HANDLE | | | |
| 21 | Spring pin | SVCU | 1 | 4 | U shaped handle | SVCG | 1 |
| CAM SUPPORT PIN | | | | 16 | Hex hole disc bolt | SVCF | 2 |
| 10 | Cam support bolt | SVCK | 1 | 17 | U shaped nut | | 2 |
| 11 | Cam support nut | | 1 | 18 | Collar | SVCZ | 2 |
| 19 | Spring pin | SVCO | 1 | 20 | Spring pin | SVCQ | 1 |
| ※12 | Collar for cam | SVCR | 2 | | | | |
| | | | | 13 | Spring | SVCS | 1 |

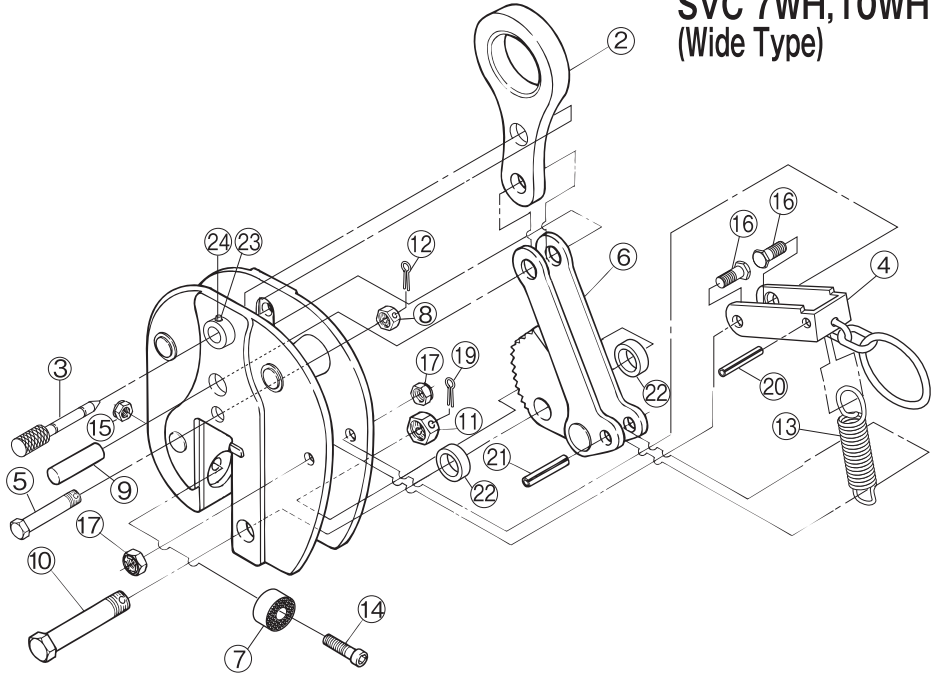
1)When ordering, specify the rated capacity (ton) of item No. and H or WH.

(Example: Cam and link for SVC3H is SLCT3H. Cam and link for SVC3WH is SVCT3WH.)

2)Periodic lubrication is required at pin and working portion. (Take off oil from the teeth of pad and cam.)

REPLACEMENT PARTS AND ASSEMBLIES

**SVC 7H,10H
SVC 7WH,10WH
(Wide Type)**



| Part No. | Part Name | Item No. | Set Q'ty | Part No. | Part Name | Item No. | Set Q'ty |
|-------------------------|-------------------------------|----------|----------|---------------------|-----------------------|----------|----------|
| SHACKLE ASSEMBLY | | | | PAD ASSEMBLY | | | |
| 2 | Shackle | SVCH | 1 | 7 | Pad | SVCP | 1 |
| 9 | Shackle support pin | SVCY | 1 | 14 | Hex hole bolt | SVCV | 1 |
| CAM ASSEMBLY | | | | 15 | Nylon nut | | 1 |
| 6 | Cam, Link, Link pin | SVCT | 1 | HANDLE | | | |
| 21 | Spring pin | SVCU | 1 | 4 | U shaped handle | SVCG | 1 |
| CAM SUPPORT PIN | | | | 16 | U shaped support bolt | SVCF | 2 |
| 10 | Cam support bolt | SVCK | 1 | 17 | U shaped support nut | | 2 |
| 11 | Cam support nut | | 1 | 20 | Spring pin | SVCQ | 1 |
| 19 | Split pin for cam support nut | SVCW | 1 | LOCK PIN | | | |
| 22 | Collar for cam | SVCR | 2 | 13 | Spring | SVCS | 1 |
| RETAINING PIN | | | | LOCK PIN | | | |
| 5 | Retaining bolt | SVN | 1 | 3 | Cam open lock pin | SVCB | 1 |
| 8 | Retaining nut | SVCN | 1 | 23 | Plunger bolt | SVCC | 2 |
| 12 | Retaining split pin | SVCA | 1 | 24 | Plunger nut | | 2 |

1)When ordering, specify the rated capacity (ton) of item No. and H or WH.
 (Example: Cam and link for SVC7H is SLCT7H. Cam and link for SVC7WH is SVCT7WH.)
 2)Periodic lubrication is required at pin and working portion. (Take off oil from the teeth of pad and cam.)