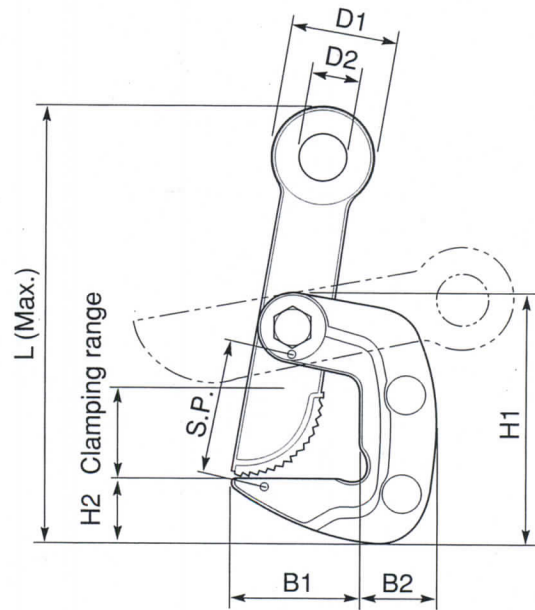
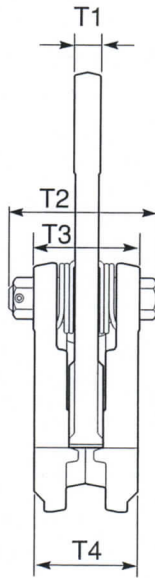


Horizontal Lifting Clamp

Model : HPC-N

Operation method

1. Remove iron powder, sand, oil, stone or other harmful deposits on the steel plate, cam and pad of the body.
2. Insert steel plate (Object to be lifted) to the full depth of the opening part of body pushing down the shackle a little bit.
3. When detaching steel plate, remove the clamp by pushing down the shackle of clamps after loosed wire rope.

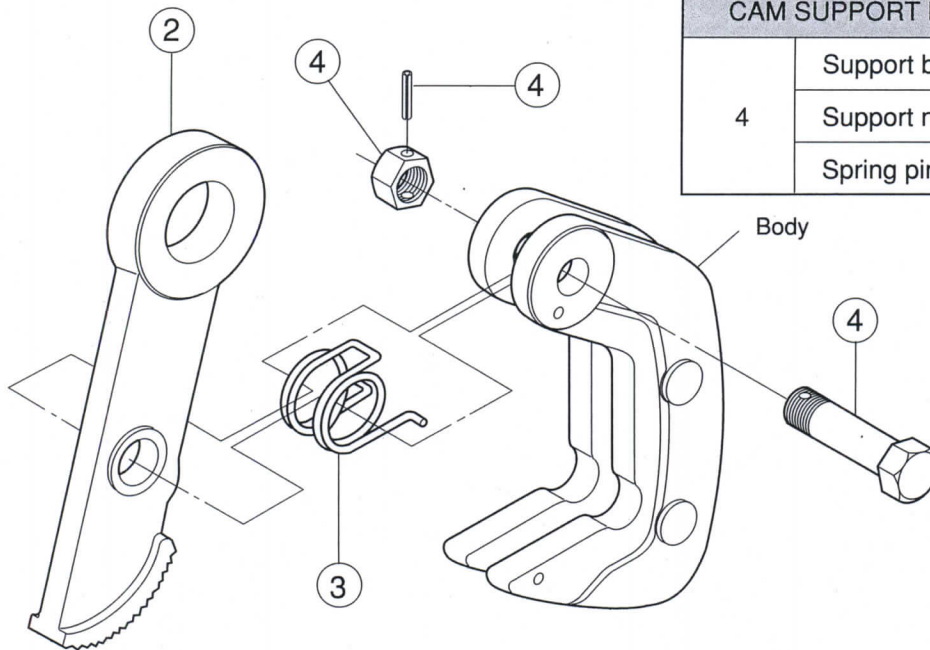


Dimensions in mm

Item No.	Rated capacity (ton)	Clamping range (mm)	L	H1	H2	B1	B2	D1	D2	T1	T2	T3	T4	S.P.	Weight (kg)
HPC 0.5N	0.5	0~35	170	96.5	25	51.5	31	40	18	10	57	41.2	40.2	52	0.9
HPC 1N	1	0~40	204	117.0	32	59.0	39	50	23	13	72	52.0	51.0	61	1.8
HPC 2N	2	0~50	268	152.5	33	73.0	52	67	30	17	92	68.0	67.0	76	4.0
HPC 3N	3	0~60	329	181.0	51	88.0	62	82	36	22	108	82.0	80.0	90	6.8
HPC 5N	5	0~80	415	236.0	66	117.0	78	101	46	28	138	104.0	102.0	121	15.0

Replacement parts and fittings (Model : HPC-N)

Part No.	Part Name	Item No.
2	Cam	HPCT
3	Spring	HPCS
CAM SUPPORT BOLT ASSEMBLY		HPCK
4	Support bolt for cam	
	Support nut for cam	
	Spring pin	



Replacement procedure for cam

Disassembling of cam

Pull out spring pin in nut side, and remove bolt and nut.

Then, pull out ends of spring from spring hole of body with edge of Screw Driver of linkes.

Reassembling of cam

After installed spring onto cam, insert ends of spring into spring holes of body. Join bolt holes of cam and body in line. Then, insert bolt and tighten bolt and nut. After tightend and nut, insert spring pin into pin holes of nut and bolt.