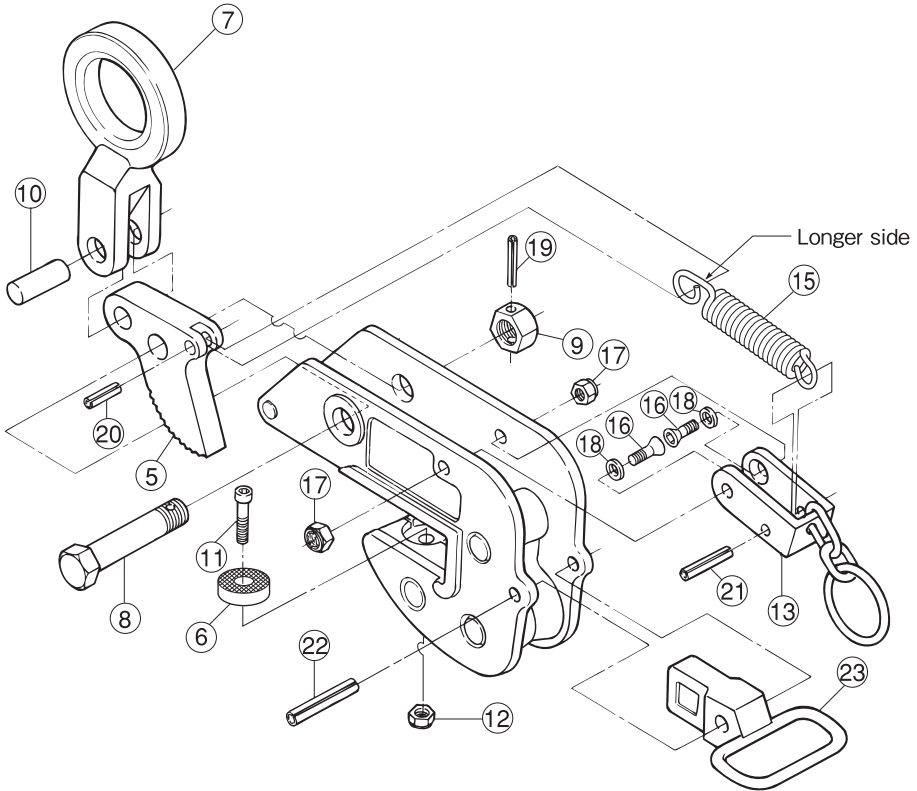


REPLACEMENT PARTS AND ASSEMBLIES HLC0.5~3H

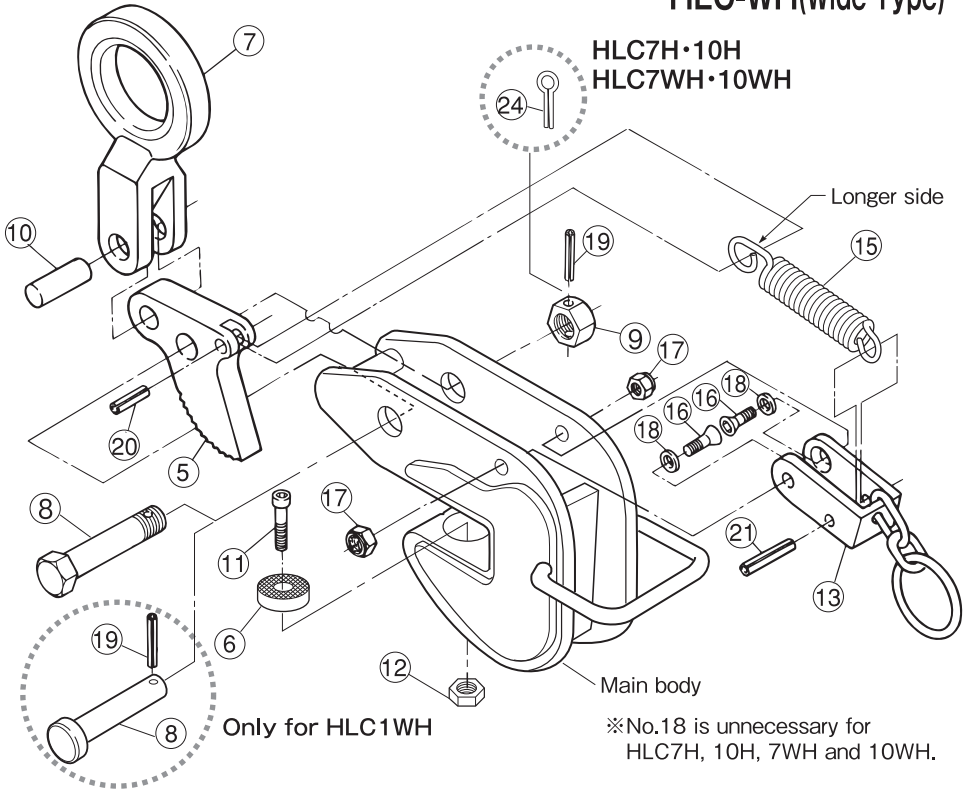


Part No.	Part Name	Item No.	Set Q'ty	Part No.	Part Name	Item No.	Set Q'ty
SHACKLE ASSEMBLY				HANDLE			
7	Shackle	HLCH	1	13	U shaped handle	HLCU	1
10	Connection pin	HLCY	1	21	Spring pin	HLCQ	1
Cam				16	Hex. hole bolt	HLCK	2
5	Cam	HLCT	1	17	U shaped nut	HLCK	2
20	Spring pin	HLCR	1	18	Collar	HLCC	2
8	Support bolt	HLCN	1	15	Spring	HLCS	1
9	Support nut						
19	Spring pin	HLCO	1	GRIP			
Pad				22	Spring pin	HLCJ	1
6	Pad	HLCP	1	23	Grip	HLCG	1
11	Hex. hole bolt	HLCV	1				
12	Nylon nut		1				

1)When ordering, specify the rated capacity (ton) of item No. and H.
 (Example: Cam for HLC2H is HLCT2H.)

2)Periodic lubrication is required at pin and working portion.

REPLACEMENT PARTS AND ASSEMBLIES ■ HLC5H~10H HLC-WH(Wide Type)



Part No.	Part Name	Item No.	Set Q'ty	Part No.	Part Name	Item No.	Set Q'ty
SHACKLE ASSEMBLY				PAD ASSEMBLY			
7	Shackle	HLCH	1	6	Pad	HLCP	1
10	Connection pin	HLCY	1	11	Hex. hole bolt	HLCV	1
CAM ASSEMBLY				12	Nylon nut		1
5	Cam	HLCT	1	HANDLE			
20	Spring pin	HLCR	1	13	U shaped handle	HLCU	1
8	Support pin	HLCN	1	21	Spring pin	HLCQ	1
8	Support bolt		1	16	Hex. hole bolt	HLCK	2
9	Support nut	1	17	U shaped nut	2		
19	Spring pin	HLCO	1	18	Collar	HLCC	2
24	Sprit pin	HLCW	1				
				15	Spring	HLCS	1

1)When ordering, specify the rated capacity (ton) of item No. and H or WH.

(Example: Cam for HLC1WH is HLCT1WH.)

2)Periodic lubrication is required at pin and working portion.