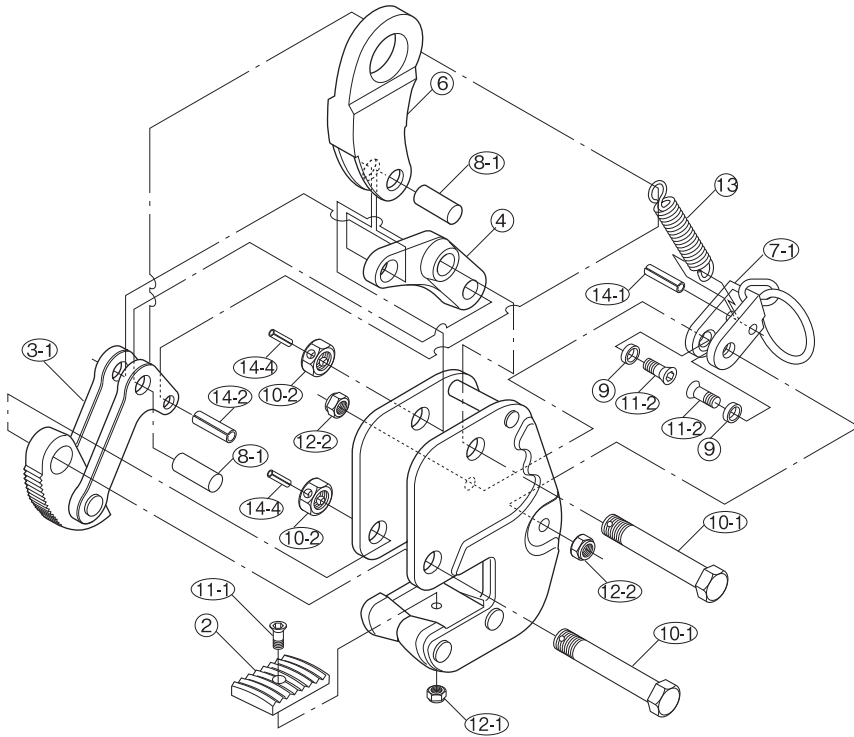


REPLACEMENT PARTS AND ASSEMBLIES



Part No.	Part Name	Item No.	Set Q'ty	Part No.	Part Name	Item No.	Set Q'ty
SHACKLE ASSEMBLY				PAD ASSEMBLY			
6	Shackle	GVH	1	2	Pad	GVCP	1
CAM ASSEMBLY				LOCK HANDLE ASSEMBLY			
3-1	Cam (with link)	GVT	1	11-1 · 12-1	Bolt/Nut for pad	GVCV	each 1
8-1	Connection pin			7-1	U shaped handle	GVCG	1
14-2	Spring pin (for l-shape link)			11-2 · 12-2	Hex. hole disc bolt/U nut	GVCF	2
CAM SUPPORT BOLT				9	Collar		
10-1·10-2	Support bolt /nut	GVK	1	14-1	Spring pin (for U shaped handle)		1
14-4	Spring pin (for support bolt)			L-shape link			
SHACKLE SUPPORT BOLT				4	L-shape link	GVCM	1
10-1·10-2	Support bolt /nut	GVK	1	8-1	Connection pin	GVCY	1
14-4	Spring pin (for support bolt)						
				13	Spring	GVCS	1

- 1) When ordering, specify the rated capacity (ton)of item No. and R.
(Example: Shackle assembly for GVC1R is GVH1R)
- 2) Periodic lubrication is required at pin and working portion.
(Remove oil of pad and cam teeth.)