

# HW General Purpose Hand Winch



## General Purpose Hand Winch HW-2000

- 0.9t (2000 lbs) capacity
- Available in regular or split reel, which allows for operation of two line or cables for greater versatility
- Available in handle or loop drive models
- Can be ceiling mounted with loop drive
- Operating temperature -20°C to +80°C (-4°F to +176°F) (temperature range of -40°C to +80°C (-40°F to +176°F) available as an option)

## General Purpose Hand Winch HW-1200

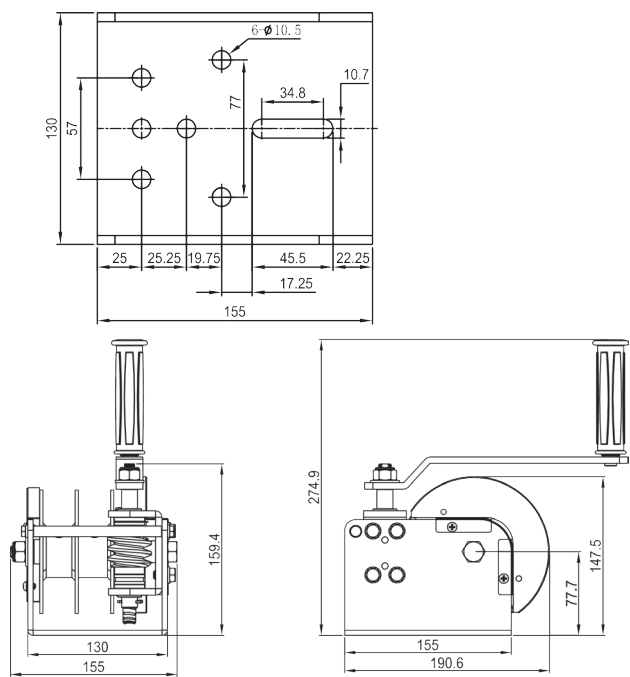
- 0.54t (1200 lbs) capacity
- Ability to disengage the gear to allow fast pay out of the cable

## General Purpose Hand Winch HW-0600

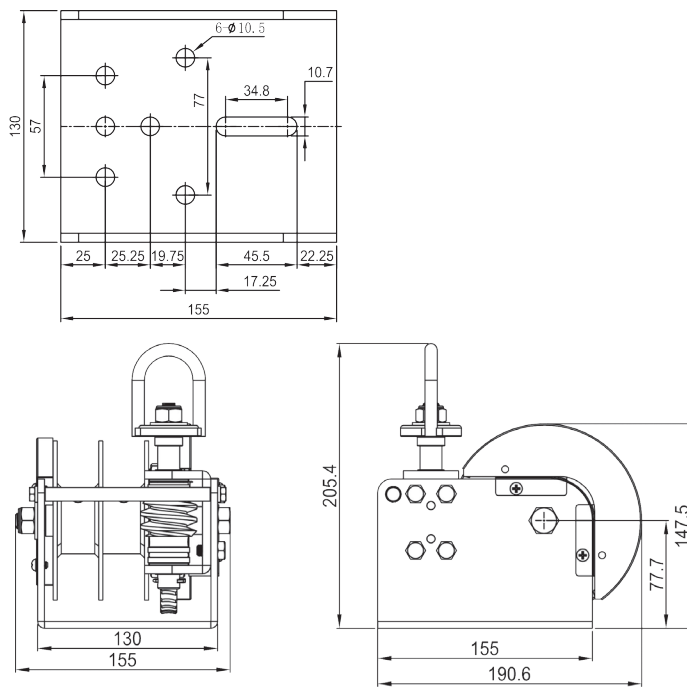
- 0.27t (600 lbs) capacity
- Ability to disengage the gear to allow fast pay out of the cable

Product Code	Pulling capacity (lbs, kg)	Hand force required (kg, lb)	Gear ratio	Hub diameter (mm, in)	Handle length (mm, in)	Unit weight (with handle) (kg, lb)	Unit weight (with loop)	Cable diameter (mm,in)	Cable storage cap.(m, ft)
HW-0600	600, 270	7.0, 15.4	3.1:1	Ø19, Ø0.74	175, 6.9	*2.26, 4.98	N/A	Ø4.0, Ø5/32	28, 92
HW-1200	1200, 545	20.0, 44.1	4.1:1	Ø50, Ø1.97	210, 8.3	*2.84, 6.26		Ø4.8, Ø3/16	29, 95
HW-2000	2000, 900	4.5, 9.9	41:1	Ø48, Ø1.89	190, 7.5	*5.7, 12.57	*5.4, 11.91	Ø4.8, Ø3/16	17.6, 57.7

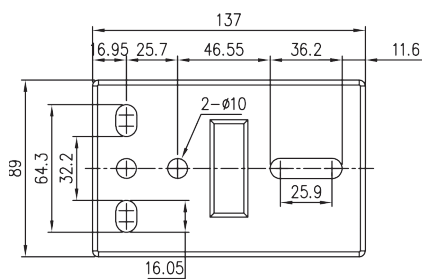
\*Weights for HW range are for single reel model  
For winches with split reels, each side has half the capacity



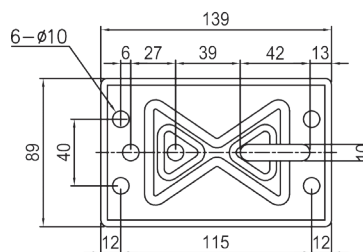
HW-2000  
(with handle)



HW-2000  
(with loop)



HW-1200



HW-600

