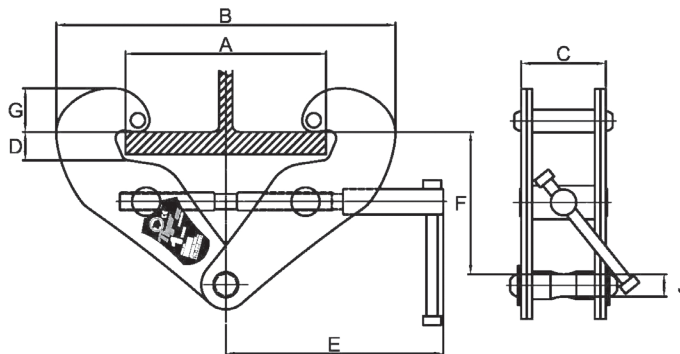


Adjustable Beam Clamp BC

- Range from 1.0t to 10t
- Quick and versatile rigging point for hoisting equipment
- Low headroom because of the built in anchor point
- Multidirectional adjusting screw spindle for easy attachment and safe and secure grip
- Wide Beam flange adjustment range
- Operating temperature of -50°C to $+50^{\circ}\text{C}$ (-58°F to $+122^{\circ}\text{F}$)
- 5:1 factor of safety
- These units meet and exceed all the requirements within BS EN 13155:2003+A2:2009 and AS4991



Product Code	Capacity (tons, T)	Dimensions (mm, in)								Net Weight (lb)
		A	B	C	D	E	F	G	J	
BC-0100	1.0, 1.1	72-210, 2.8-8.3	182-328, 7.2-12.9	77, 3.0	26, 1.0	190, 7.5	144-117, 5.7-4.6	52-38, 2.0-1.5	20, 0.8	7.7
BC-0200	2.0, 2.2	72-210, 2.8-8.3	182-328, 7.2-12.9	85, 3.3	26, 1.0	190, 7.5	144-117, 5.7-4.6	52-38, 2.0-1.5	20, 0.8	9.9
BC-0300	3.0, 3.3	73-305, 2.9-12.0	214-460, 8.4-18.1	107, 4.2	35, 1.38	240, 9.4	224-179, 8.8-7.0	58-40, 2.3-1.6	22, 0.9	17.6
BC-0500	5.0, 5.5	73-305, 2.9-12.0	214-460, 8.4-18.1	121, 4.8	35, 1.38	240, 9.4	224-175, 8.8-6.9	58-40, 2.3-1.6	28, 1.1	22.0
BC-1000	10.0, 11.0	120-350, 4.7-13.8	289-496, 11.4-19.5	135, 5.3	36, 1.42	277, 10.9	231-182, 9.1-7.2	75-58, 3.0-2.3	38, 1.5	52.9