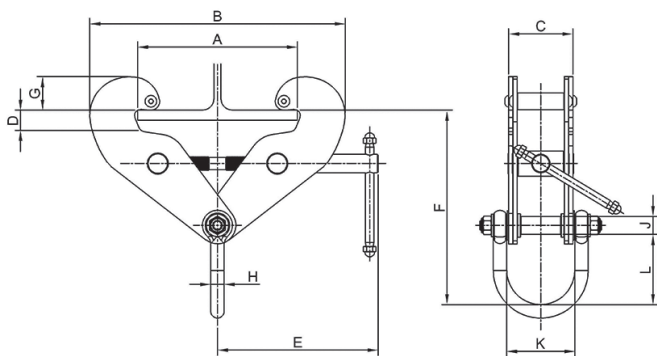
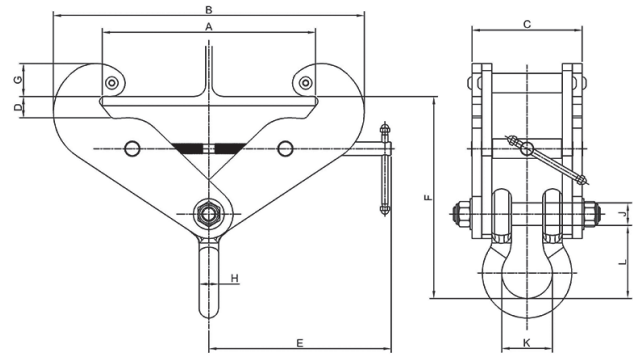


# Adjustable Beam Clamp with Shackle BCS

- Range from 1.0t to 10t
- Quick and versatile rigging point for hoisting equipment
- Shackle suspension point
- Highly flexible – for lifting, pulling or as an anchor point
- Multidirectional adjusting screw spindle for easy attachment and safe and secure grip
- Wide Beam flange adjustment range
- Operating temperature of -50°C to +50°C (-58°F to +122°F)
- 5:1 factor of safety
- These units meet and exceed all the requirements within BS EN 13155:2003+A2:2009 and AS4991



1-5t



10t

Note: Some stock in the 1t – 5t range may be supplied with a bow shackle rather than a D shackle (as in the drawing of the 10t unit above). If the fitting or dimensions are critical please contact us for information on availability.

| Product Code | Capacity (tons, T) | Dimensions (mm, in) |                    |          |         |           |                    |                |         |         |          | Net Weight (lb) |      |
|--------------|--------------------|---------------------|--------------------|----------|---------|-----------|--------------------|----------------|---------|---------|----------|-----------------|------|
|              |                    | A                   | B                  | C        | D       | E         | F                  | G              | H       | J       | K        |                 | L    |
| BCS-0100     | 1.0, 1.1           | 75-210, 3.0-8.3     | 182-328, 7.2-12.9  | 77, 3.0  | 26, 1.0 | 190, 7.5  | 250-225, 9.8-8.9   | 52-38, 2.0-1.5 | 16, 0.6 | 21, 0.8 | 81, 3.2  | 83, 3.3         | 9.9  |
| BCS-0200     | 2.0, 2.2           | 75-210, 3.0-8.3     | 182-328, 7.2-12.9  | 85, 3.3  | 26, 1.0 | 190, 7.5  | 260-236, 10.2-9.3  | 52-38, 2.0-1.5 | 18, 0.7 | 21, 0.8 | 89, 3.5  | 94, 3.7         | 12.1 |
| BCS-0300     | 3.0, 3.3           | 75-305, 3.0-12.0    | 214-460, 8.4-18.1  | 107, 4.2 | 35, 1.4 | 240, 9.4  | 357-311, 14.1-12.2 | 58-40, 2.3-1.6 | 22, 0.9 | 27, 1.1 | 112, 4.4 | 105, 4.1        | 20.9 |
| BCS-0500     | 5.0, 5.5           | 75-305, 3.0-12.0    | 214-460, 8.4-18.1  | 121, 4.8 | 35, 1.4 | 240, 9.4  | 363-315, 14.3-12.4 | 58-40, 2.3-1.6 | 27, 1.1 | 27, 1.1 | 125, 4.9 | 111, 4.4        | 24.3 |
| BCS-1000     | 10.0, 11.0         | 120-350, 4.7-13.8   | 295-510, 11.6-20.1 | 180, 7.1 | 30, 1.2 | 300, 11.8 | 381-330, 15.0-13.0 | 71-54, 2.8-2.1 | 32, 1.3 | 37, 1.5 | 83, 3.3  | 120, 4.7        | 58.4 |