



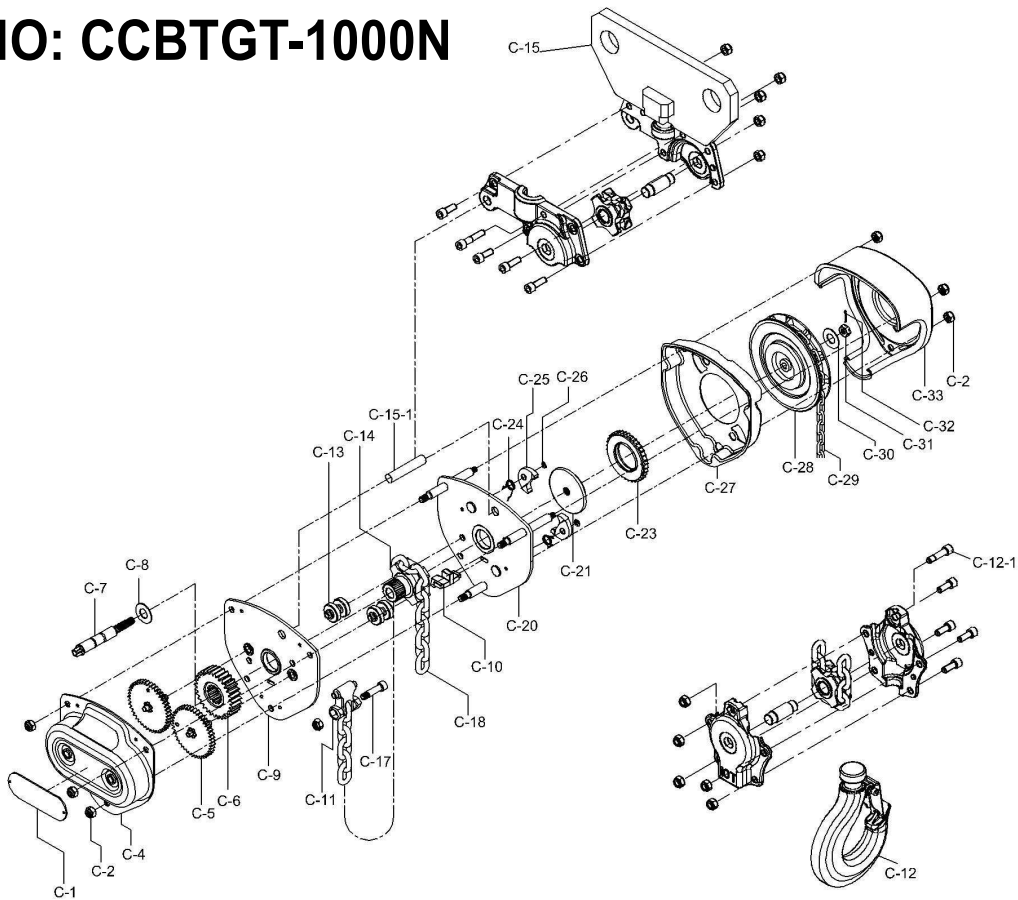
# Tiger<sup>®</sup> CE

## Chain Hoist(combined type)Operating Instructions

### WARNING

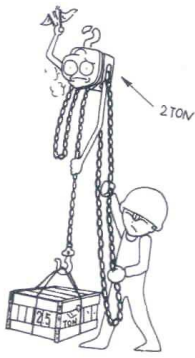
This hoist should not be installed, operated or maintained by any person who has not read all the contents of these General Instructions. Failure to read and comply with these instruction or any one of the limitation noted herein can result in serious bodily injury and / or property damage.

**MODEL NO: CCBTGT-1000N**

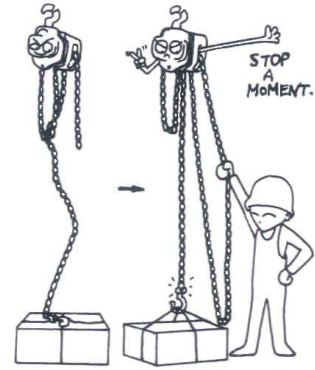


Part No.	Part Name	Quantity	Part No.	Part Name	Quantity
C-1	Label	1	C-17	Chain-End-Fixing Pin	1
C-2	Nut	6	C-18	Load Chain	1
C-4	Gear Cover	1	C-20	Wheel-side Plate Assembly	1
C-5	Pinion(with Pinion Gear)	2	C-21	Disc Hub	1
C-6	Load Gear	1	C-23	Ratchet Gear with Brake Disc	1
C-7	Pinion Shaft	1	C-24	Pawl Spring	2
C-8	Pinion Shaft Washer	1	C-25	Pawl	2
C-9	Gear - Side Plate	1	C-26	Snap Ring for Pawl Pin	2
C-10	Chain Stripper	1	C-27	Ratchet Gear Cover	1
C-11	Load Chain Anchoring	1	C-28	Handwheel	1
C-12	Bottom Hook Assembly	1	C-29	Hand Chain	1
C-12-1	Bottom Hook Pin	1	C-30	Washer for Pinion Shaft Nut	1
C-13	Load Chain Guide	2	C-31	Check Nut	1
C-14	Load Sheave	1	C-32	Cutter Pin for Check Nut	1
C-15	Connecting Plate/Connection Kit	2	C-33	Handwheel Cover	1
C-15-1	Connecting Bolt	1			

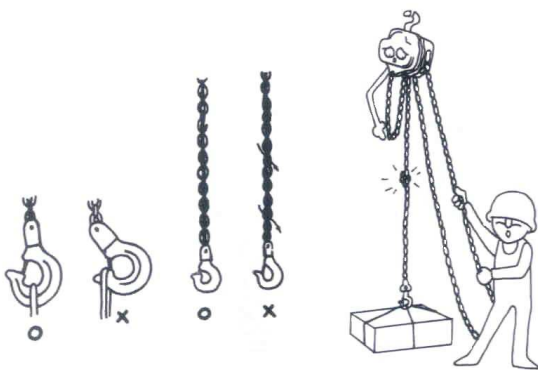
# 1 IMPORTANT REMARKS FOR OPERATORS INSPECTION



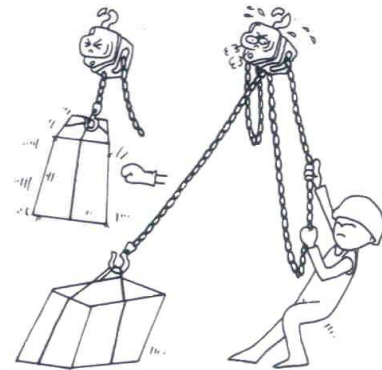
Do not overload your chain hoist.



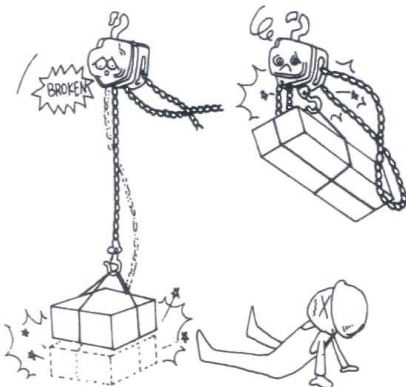
Do not give the load a sudden take-off. Take a breath when the load chain is just taut, and check for brake action by pulling up and down about 10cm above floor.



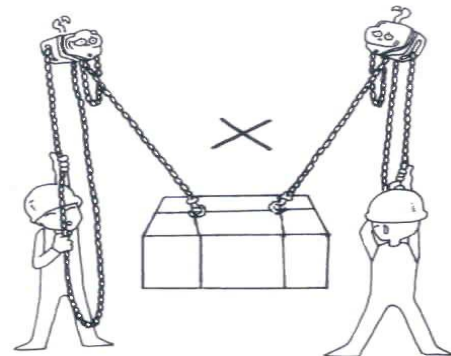
Do not use the chain with a kink.



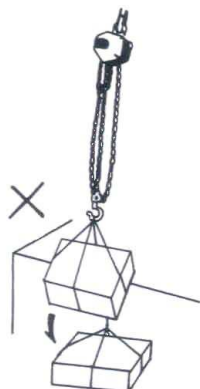
Do not drag load against floor.



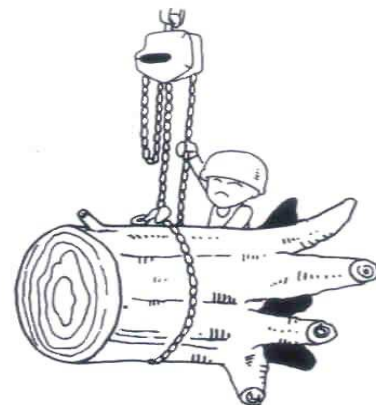
Do not raise too far or lower too fast.



Do not try to suspend a load with two hoists.



Never give a shock load to a hoist, even if the distance is very short.



Do not wrap the load chain around the load.

## **2 MAINTENANCE**

After use, service the hoist before storing it.

Servicing and repairs should only be carried out by qualified, competent, and responsible people.

- (a) Clean the hoist thoroughly.
- (b) Keep the hoist well-lubricated. Oil the load chain and hook shank.
- (c) Store the hoist correctly against rain and moisture.

When the hoist is installed outdoors, exceptional care should be taken regarding maintenance.

## **3 INSPECTION**

### **Frequent Inspections:**

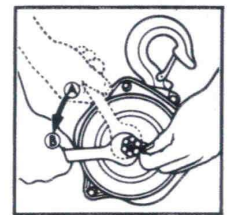
Visual Inspection by operator or other authorized person, and listening (while hoist operates) for unusual sounds which may indicate trouble.

### **Exception:**

Brakes require more than audio-visual inspection. Check frequently by operating hoist, with and without load, stopping at various positions to test holding power and observe amount of drift, if any.

### **To Adjust Brake:**(See Fig.1)

- A. Fully-tightened position.
- B. Slack off slightly from Position A, and insert the cutter pin.
  - ✘Replace brake disc if thickness is less than 0.08 inch.

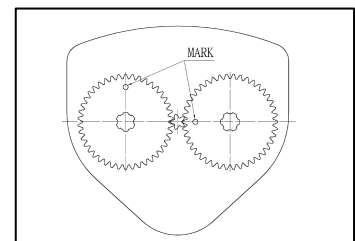


**FIGURE 1**

## **4 ALIGNMENT OF GEARS DURING REASSEMBLY**

### ● **Model No.: CB-10**

Notice the marks "0" on the gears, place "0" mark face to sheave on horizontal centerline on right side, place the other "0" mark face to up direction on vertical centerline on left side as shown. (Figure 2)



**FIGURE 2**

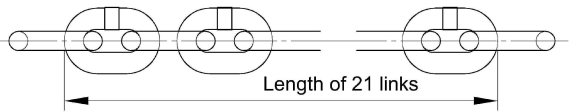
## 5 CHAIN AND HOOKS

The hooks and load chains are made of special alloy-steels and are precisely heat-treated. Never weld or heat-treat them again.

### (a) Load Chain

The load chains are exceptionally long-wearing, but wear is unavoidable and certain conditions will cause wear and corrosion that will lessen the strength. Load chains worn beyond the permissible

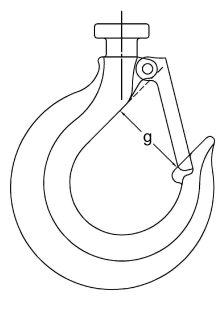
**TABLE 1 CHAIN DIMENSIONS**

		
Model No.	Diameter of Chain Wire	Maximum Allowable Gauge Length
CB-10	10.0mm	21 links=668.0mm

### (b) Hooks

The hook opening will elongate with overloads and incorrect hooking. When the hook opening is elongated beyond the permissible limits shown in the Table 2, it is dangerously deformed and must be replaced immediately.

**TABLE 2- HOOK THROAT OPENING**

	Capacity t	Hook Throat Opening (mm)	
		e	
	Normal	Discard $\geq$	
10	70	78	

## 6 TEST CERTIFICATE

It is hereby certified that this product was manufactured under our single-unit control of quality and was passed with strict inspection in accordance with our inspection standards.

Capacity (t)	S. W. L. (kgs)	Test Load (kgs)
10	10000	15000



# Tiger<sup>®</sup> CE

## Geared Trolley (combined type) Operating Instructions Model: CCBTGT-1000N

**WARNING: BEFORE USING THE TROLLEY, READ CAREFULLY THIS MANUAL AND KEEP IT FOR FUTURE NEEDS.**

### (A) INSTALL

- ① Measure I-beam W-dimension.(FIGURE 1)
- ② Use adjusting collar to adjust the Trolley range to fit I-Beam.(FIGURE 2 & 3)
- ③ Make sure the Hook Receiving right in the center of the two side plate. (FIGURE 4)
- ④ Completely tighten the Nylon Nut.

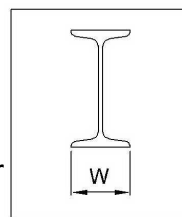


FIGURE 1

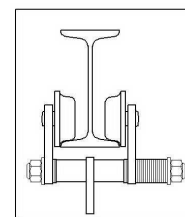


FIGURE 2

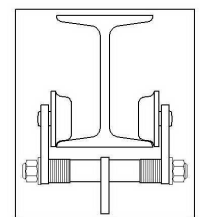


FIGURE 3

### (B) IMPORTANT SAFETY INFORMATION

- ① Do not over loading.(FIGURE 5)
- ② Load just under the trolley.  
Do not operate the trolley loaded slantwise. (FIGURE 6)
- ③ This trolley is not used to transport People or for loads over areas where People could be present.

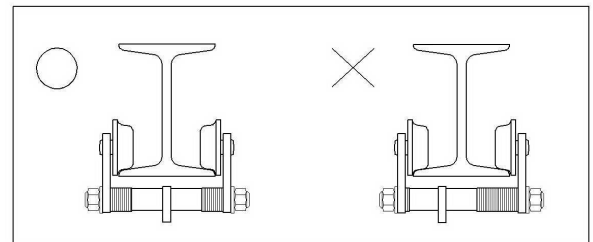


FIGURE 4

### (C) MAINTENANCE & INSPECTION

- . User have to check the Nylon Nut for Suspended Shaft periodically, to ensure the Nylon Nut completely tighten.
- . Regarding the maintenance of Geared Trolley, keep the Pinion Gear well lubricated for continued smooth performance.

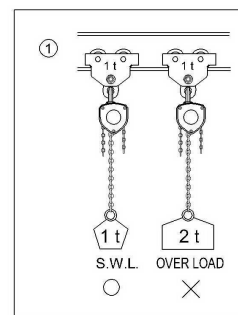


FIGURE 5

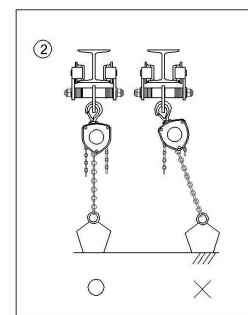


FIGURE 6

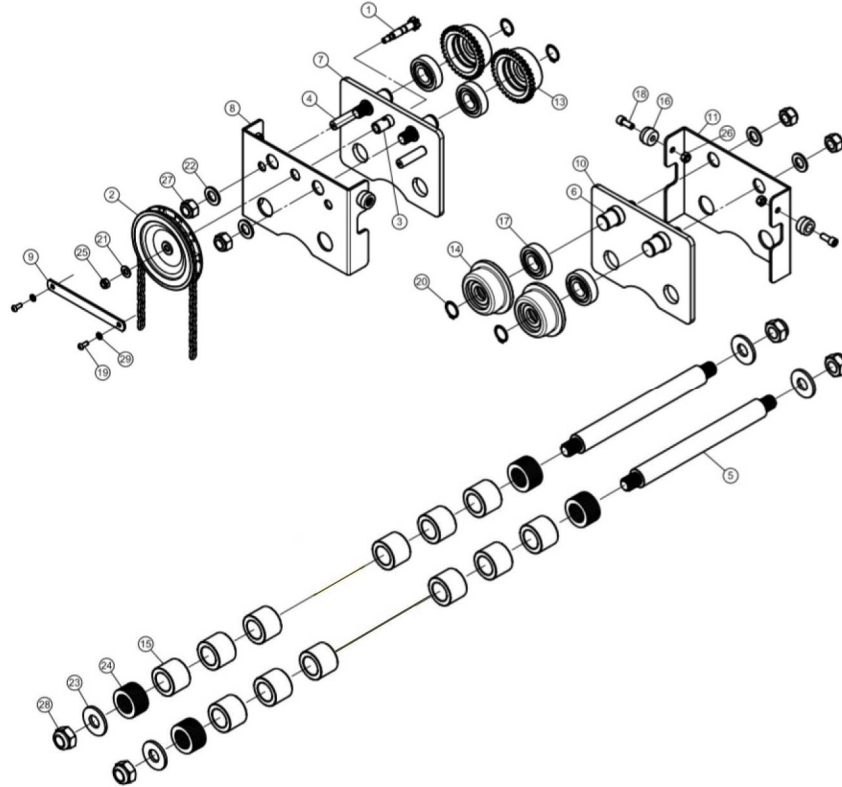
### (D) SPECIFICATIONS

Type	Cap. ton	Safe Working Load kg	Standard I-Beam Min. size Max. size mm	Max. Distance Between spans M	Track widths Adjustable Ranges mm	Min. curve Radius M
GT-10-TW	10	10000	250 x 125 x 10 600 x 190 x 16	1.5 7.0	125-320	1.5

## (E) NOISE INFORMATION

- . Operating Conditions: Full loading
- . Measurement method: Circling the Trolley at a distance of 1 metre from the surface of the Trolley and at height of 1.6 metres from the floor.
- . The value of the maximum sound pressure is : Plain Trolley – 58 dB  
Geared Trolley – 69 Db

## (F) EXPLODED VIEW & PARTS LIST:



REF. NO.	PART NO.	PART NAME	QTY.	REF. NO.	PART NO.	PART NAME	QTY.	REF. NO.	PART NO.	PART NAME	QTY.
1	P-1	Gear Shaft	1	11	P-11	Plain Side Plate B	1	22	P-22	Washer	4
2	P-2	Hand Wheel	1	13	P-13	Gear Roller	2	23	P-23	Washer	4
3	P-3	Shaft Tube	1	14	P-14	Plain Roller	2	24	P-24	Adjusting Collar (short)	44
4	P-4	Roller Shaft	2	15	P-15	Adjusting Collar (long)	12	25	P-25	Nut	1
5	P-5	Suspended Shaft	2	16	P-16	Cushion Nut M24	4	26	P-26	Nut M12	4
6	P-6	Roller Pin	4	17	P-17	Ball Bearing	4	27	P-27	Nut M24	4
7	P-7	Gear Side Plate A	1	18	P-18	Screw	4	28	P-28	Nut M30	4
8	P-8	Gear Side Plate B	1	19	P-19	Screw	2	29	P-29	Washer	2
9	P-9	Protection Plate	1	20	P-20	Snap Ring	4				
10	P-10	Plain Side Plate A	1	21	P-21	Washer	1				

## TEST CERTIFICATE

It is hereby certified that this product was manufactured under our single-unit control of quality and was passed with strict inspection in accordance with our inspection standards.

Capacity (tons)	S. W. L. (kgs)	Test Load (kgs)
10	10000	15000