



# Tiger

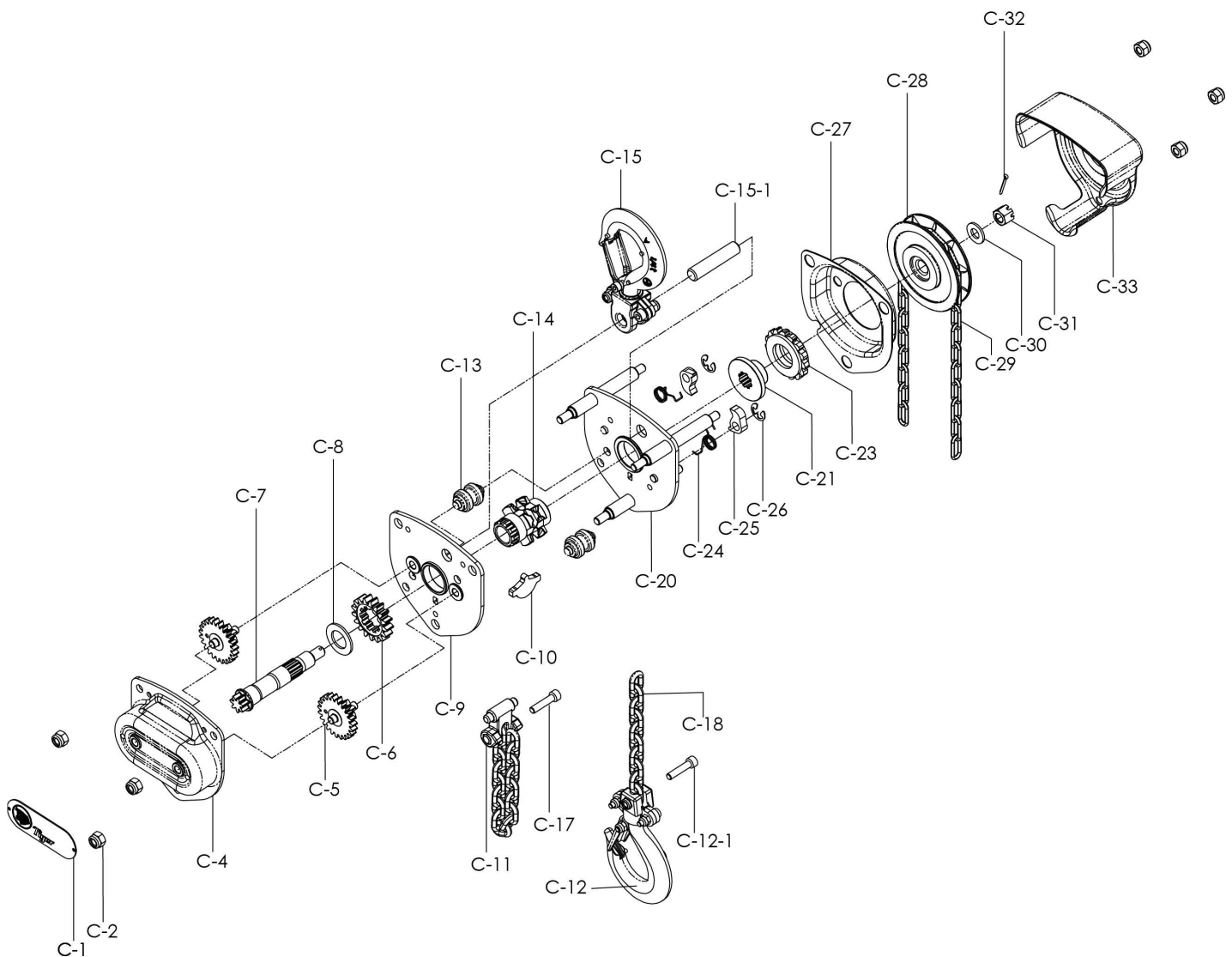
CE

## Chain Block Operating Instructions

### WARNING

This hoist should not be installed, operated or maintained by any person who has not read all the contents of these General Instructions. Failure to read and comply with these instruction or any one of the limitation noted herein can result in serious bodily injury and / or property damage.

**MODEL NO: CB-0.25**



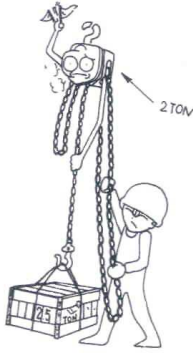
Part No.	Quantity	Part Name	Part No.	Quantity	Part Name
C-1	1	Label	C-17	1	Chain-End-Fixing Pin
C-2	6	Nut	C-18	1	Load Chain
C-4	1	Gear Cover	C-20	1	Wheel-Side Plate Assembly
C-5	2	Pinion(with Pinion Gear)	C-21	1	Disc Hub
C-6	1	Load Gear	C-23	1	Ratchet Gear with Brake Disc
C-7	1	Pinion Shaft	C-24	2	Pawl Spring
C-8	1	Pinion Shaft Washer	C-25	2	Pawl
C-9	1	Gear - Side Plate Assembly	C-26	2	Snap Ring for Pawl Pin
C-10	1	Chain Stripper	C-27	1	Ratchet Gear Cover
C-11	1	Load Chain Anchoring	C-28	1	Handwheel
C-12	1	Bottom Hook Assembly	C-29	1	Hand Chain
C-12-1	1	Bottom Hook Pin	C-30	1	Washer for Pinion Shaft Nut
C-13	2	Load Chain Guide	C-31	1	Check Nut
C-14	1	Load Sheave	C-32	1	Cutter Pin for Check Nut
C-15	1	Top Hook Assembly	C-33	1	Handwheel Cover
C-15-1	1	Top Hook Pin			

## **TEST CERTIFICATE**

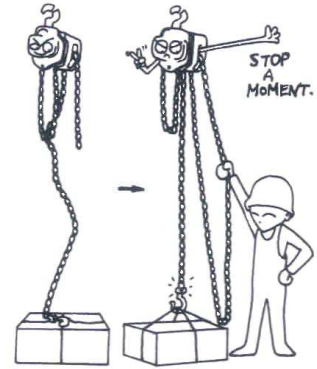
It is hereby certified that this product was manufactured under our single-unit control of quality and was passed with strict inspection in accordance with our inspection standards.

Capacity ( t )	S. W. L. ( kgs )	Test Load ( kgs )
1/4	250	375

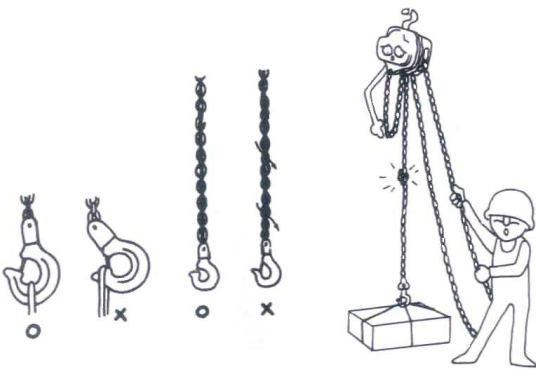
# **2** IMPORTANT REMARKS FOR OPERATORS INSPECTION



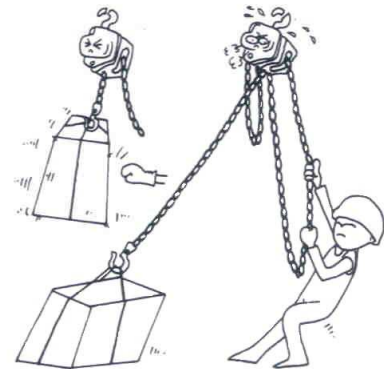
**Do not overload your chain hoist.**



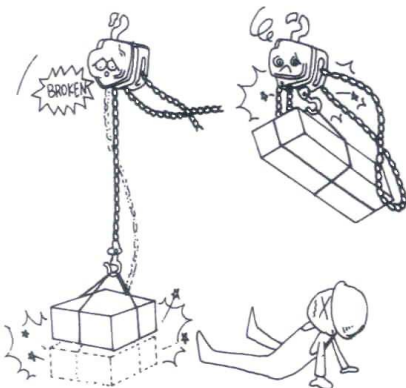
**Do not give the load a sudden take-off. Take a breath when the load chain is just taut, and check for brake action by pulling up and down about 10cm above floor.**



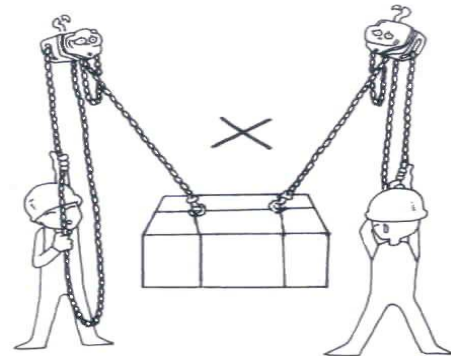
**Do not use the chain with a kink.**



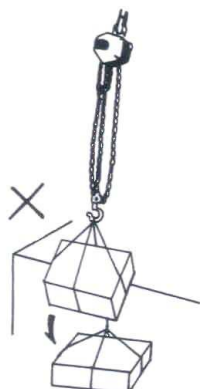
**Do not drag load against floor.**



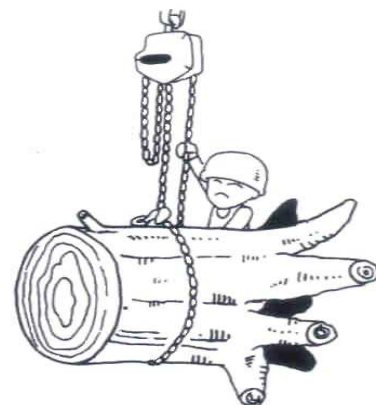
**Do not raise too far or lower too fast.**



**Do not try to suspend a load with two hoists.**



**Never give a shock load to a hoist, even if the distance is very short.**



**Do not wrap the load chain around the load.**

### 3 MAINTENANCE

After use, service the hoist before storing it. Servicing and repairs should only be carried out by qualified, competent, and responsible people.

- (a) Clean the hoist thoroughly.
- (b) Keep the hoist well-lubricated. Oil the load chain and hook shank.
- (c) Store the hoist correctly against rain and moisture.

When the hoist is installed outdoors, exceptional care should be taken regarding maintenance.

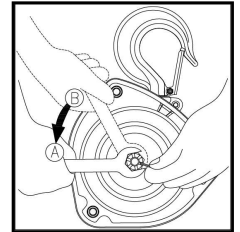
### 4 INSPECTION

**Frequent Inspections**-Visual Inspection by operator or other authorized person, and listening (while hoist operates) for unusual sounds which may indicate trouble.

**Exception:** Brakes require more than audio-visual inspection. Check frequently by operating hoist, with and without load, stopping at various positions to test holding power and observe amount of drift, if any.

**To Adjust Brake:**(See Fig.1)

- A. Fully-tightened position.
- B. Slack off slightly from Position A, and insert the cutter pin.



**FIGURE 1**

✘ Replace brake disc if thickness is less than 0.08 inch.

### 5 CHAIN AND HOOKS

The hooks and load chains are made of special alloy-steels and are precisely heat-treated. Never weld or heat-treat them again.

**(a) Load Chain**

The load chains are exceptionally long-wearing, but wear is unavoidable and certain conditions will cause wear and corrosion that will lessen the strength. Load chains worn beyond the permissible limits shown in the Table 1 must be replaced at once.

**(b) Hooks**

The hook opening will elongate with overloads and incorrect hooking. When the hook opening is elongated beyond the permissible limits shown in the Table 2, it is dangerously deformed and must be replaced immediately.

**TABLE 1 CHAIN DIMENSIONS**

Model No.	Diameter of Chain Wire	Maximum Allowable Gauge Length
CB-0.25	Ø4mm	11 links = 135mm

**TABLE 2- HOOK THROAT OPENING**

	Capacity t	Hook Throat Opening (mm)	
		e	
		Normal	Discard ≥
0.25	27	30	