



# Brake Winch Operating Instructions

Model: SF-2200

**WARNING: BEFORE USING THE WINCH, READ CAREFULLY THIS MANUAL AND KEEP IT FOR FUTURE NEEDS.**

## (A) SPECIFICATIONS

Capacity (lbs / kg)	Hand force required(kg)	Gear ratio	Hub Diameter (mm)	Handle length (mm)	Unit weight (kg)	Cable diameter (mm/inch)	Cable storage cap.(m)
2200 / 1000	10	22.2 : 1	∅ 80	300	16	∅ 8.0 / ∅ 5/16	25

## (B) FEATURES

A high quality, multi-purpose winch. SF-2200 adopt ratchet-type handle design. The ratchet handle permits reciprocating handle movement in both directions for lifting and lowering loads and accommodates installation in cramped locations such as wall and floor.

Automatic brake the ensures suspension of the load.

## (C) USE

Lifting of the load must happen by set change lever in UP position then rotating the handle clock-wise or operate handle back and forth to move load in up direction. When releasing the handle, the load remains suspended. The descent of the load must happen by set change lever in DOWN position then rotating the handle counterclock-wise or operate handle back and forth to move load in down direction.

## (D) IMPORTANT SAFETY INFORMATION

- This winch is not used to transport people or for loads over areas where people could be present.
- Never apply load on winch with cable fully extended. Keep at least three full turns of cable on the reel.
- Operate with hand power and with crank included in the equipment only. This winch should not be operated with a motor of any kind. If the winch cannot be cranked easily with one hand, it is probably over-loaded.

## (E) NOTE

The winch finish can be protected and will provide longer service if it is periodically washed with water and then wiped with light oil or wax.

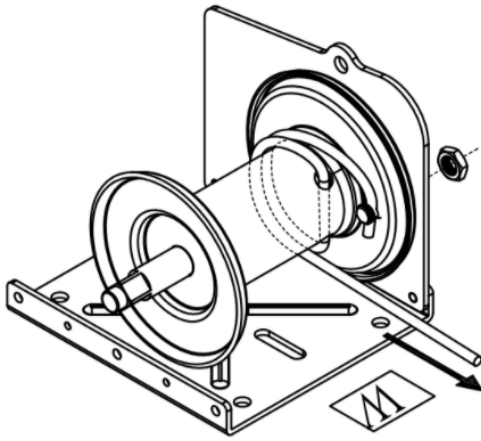
## (F) LUBRICATION

The gear box of this winch has been fully lubricated and sealed with gear cover at the factory. It is not necessary to grease gears after use.

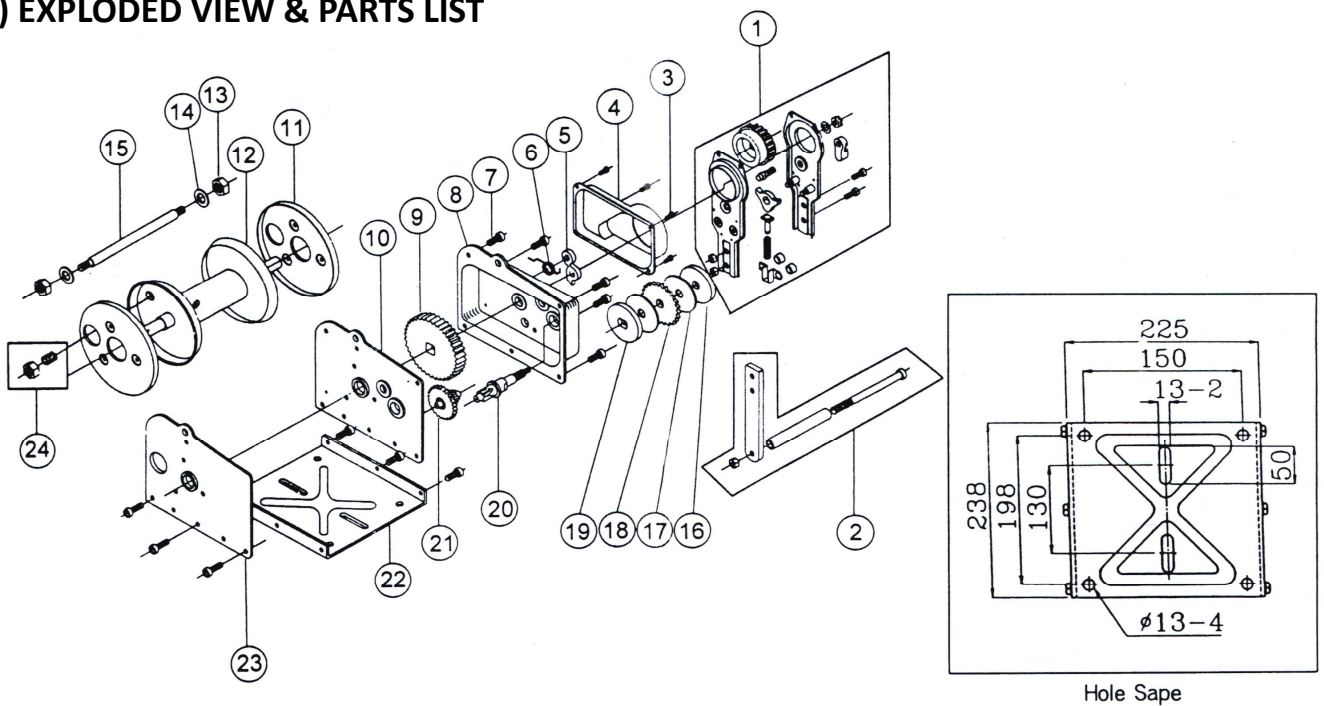
## (G) CAUTION

Do not oil or grease brake mechanism.

## (H) FIXING OF THE ROPE TO THE DRUM



## (I) EXPLODED VIEW & PARTS LIST



REF. NO.	PART NO.	PART NAME	Q'TY.	REF. NO.	PART NO.	PART NAME	Q'TY.
1	S-1	Handle Assembly	1	13	S-13	Nut	2
2	S-2	Grip Assembly	1	14	S-14	Washer	2
3	S-3	Screw	4	15	S-15	Strength Bolt	1
4	S-4	Brake Cover	1	16	S-16	Brake Back-up Plate	1
5	S-5	Pawl	1	17	S-17	Friction Disc	2
6	S-6	Pawl Spring	1	18	S-18	Ratchet Gear	1
7	S-7	Screw	1	19	S-19	Pressure Washer	1
8	S-8	Gear Cover	1	20	S-20	Pinion Shaft	1
9	S-9	Load Gear	1	21	S-21	Pinion Gear	1
10	S-10	Side Plate I Assembly	1	22	S-22	Winch Base	1
11	S-11	Reel Cover	2	23	S-23	Side Plate II Assembly	1
12	S-12	Winch Reel	1	24	S-24	Wire Anchoring Device	1

P.S. When ordering replacement parts, please specify Model No., Part No. & Quantity.